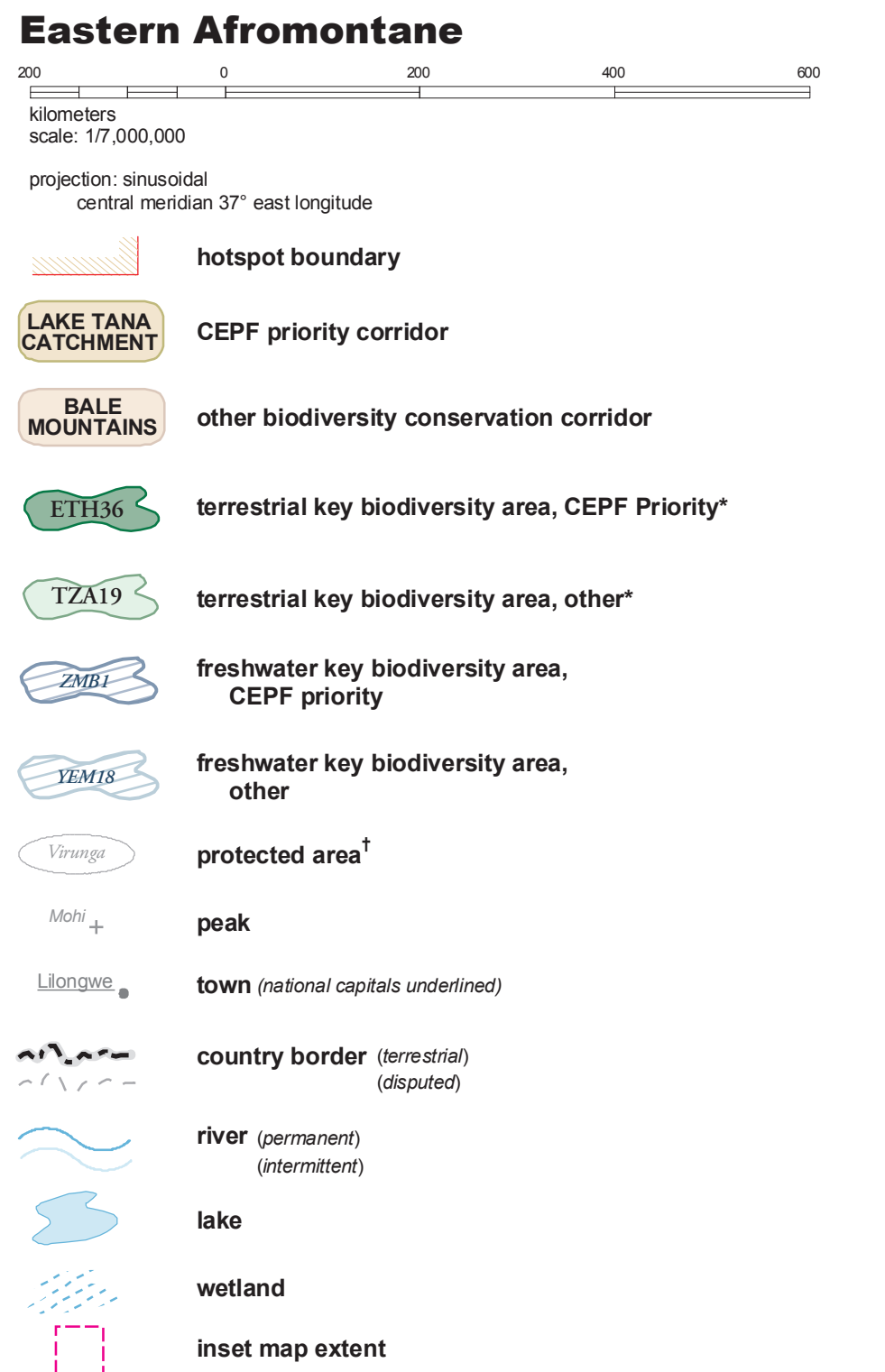
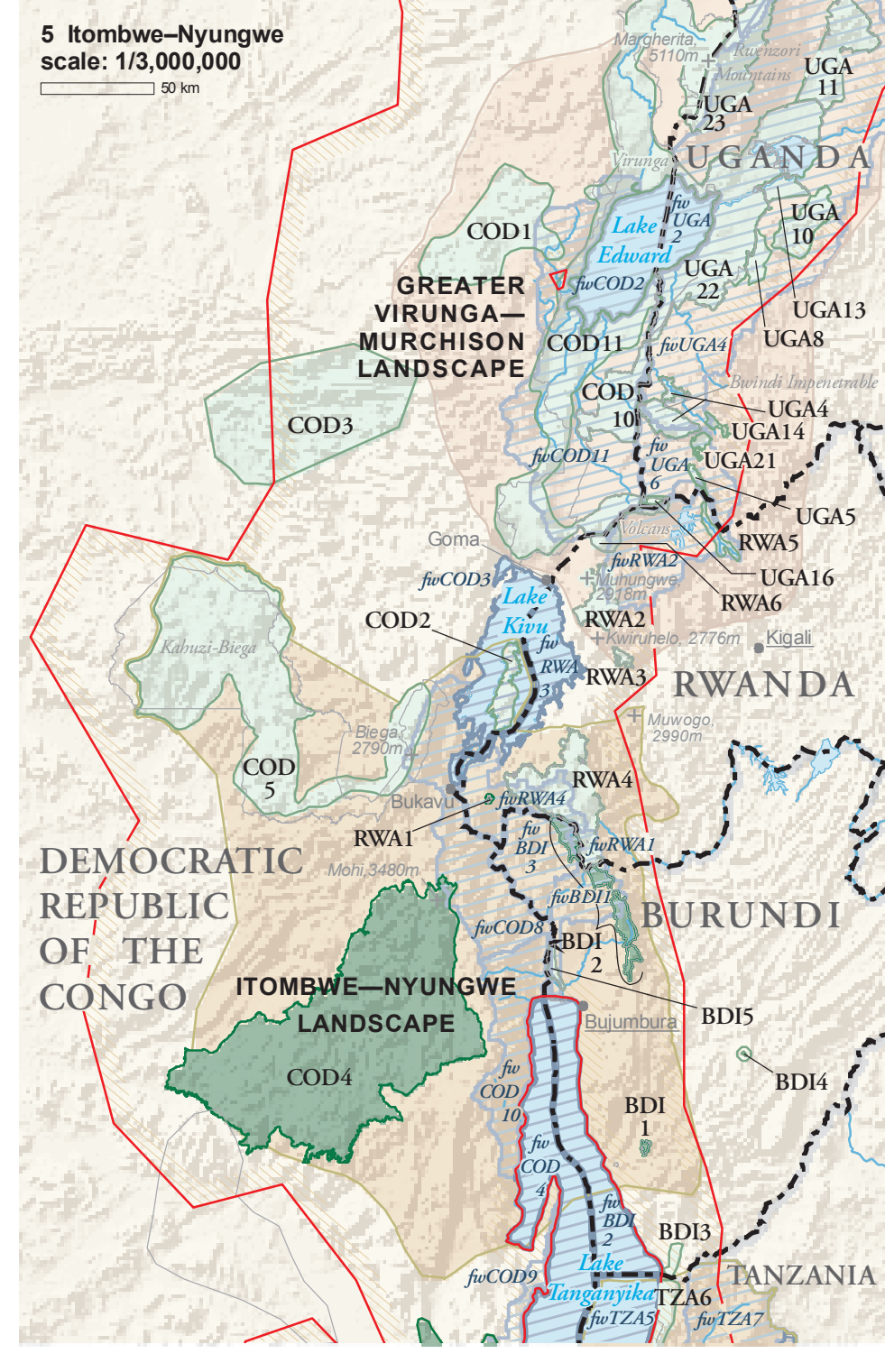
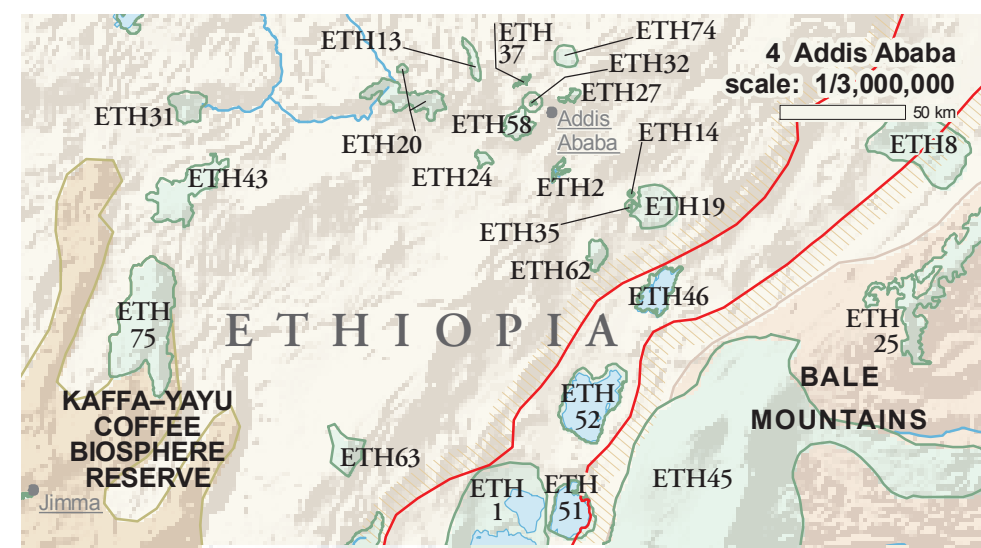
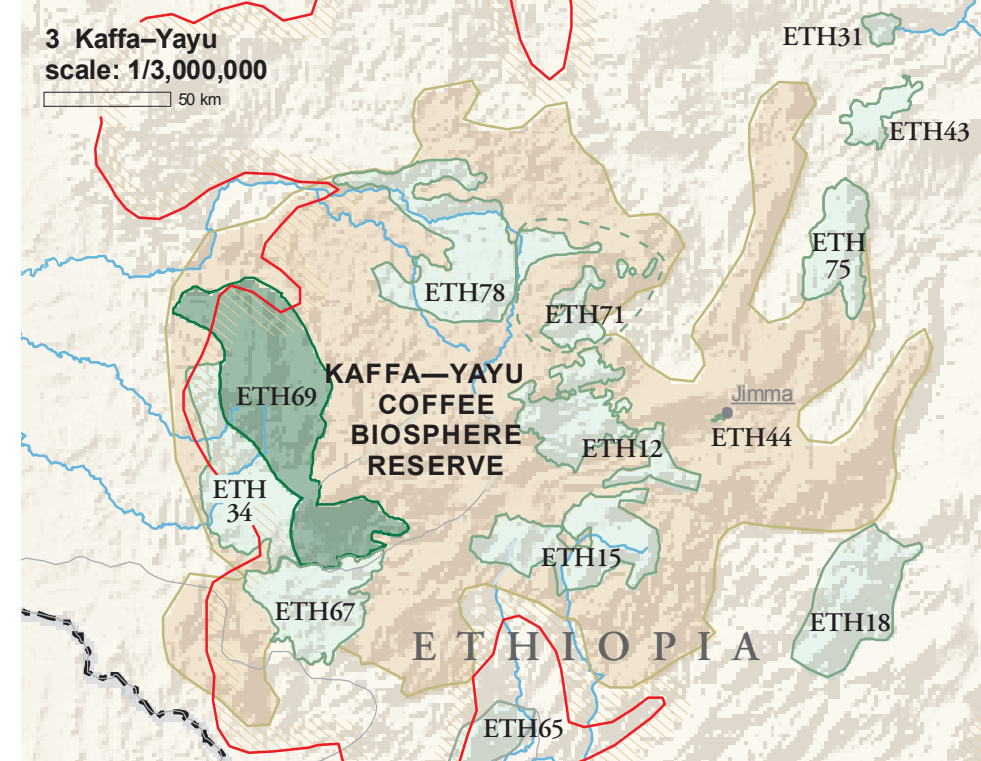
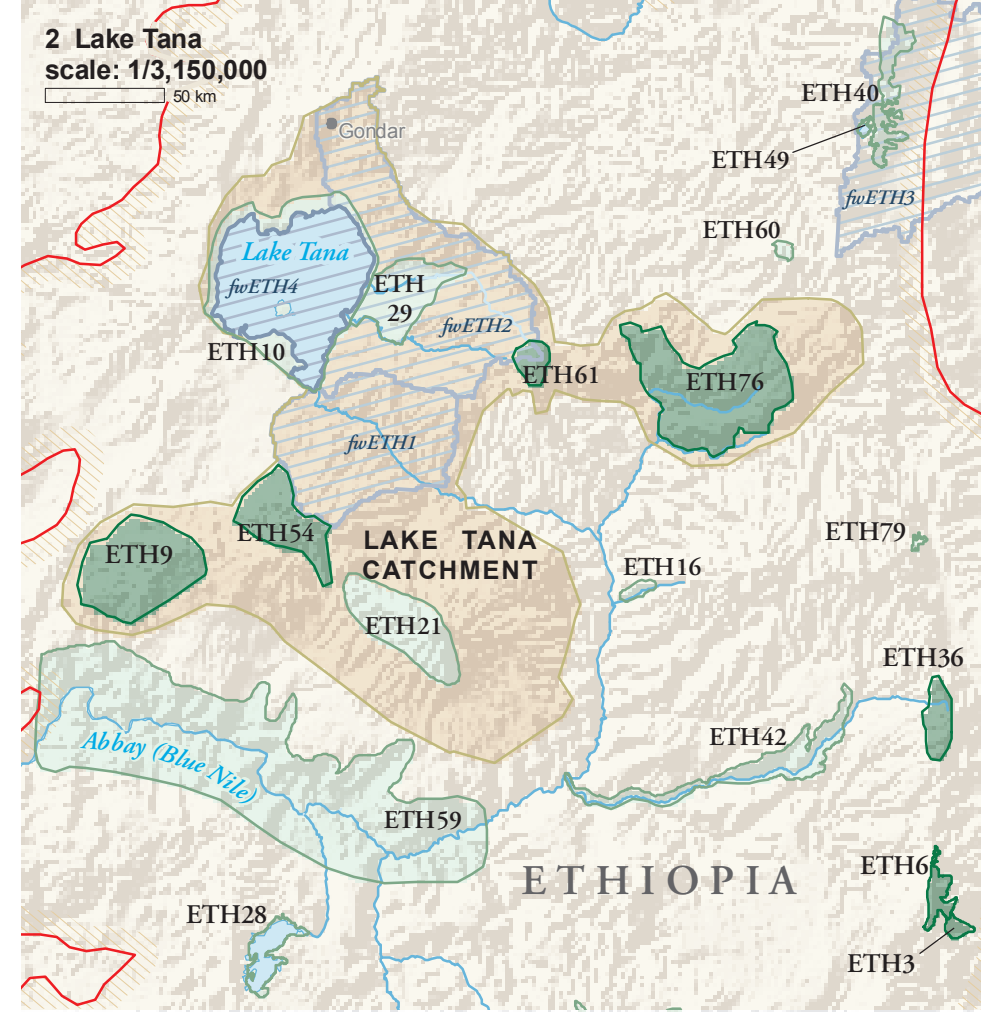


Conservation Outcomes - Eastern Afromontane

Conservation Outcomes Eastern Afromontane



Terrestrial key biodiversity areas (KBAs) incorporate management data and are delineated as discrete areas for implementing conservation action. Freshwater KBAs often include within their boundaries both focal areas for habitat conservation and wider watersheds or catchment areas. Selection based upon location and includes IUCN Categories Ia, Ib, II-VI.



Key Biodiversity Areas in the Eastern Afromontane Hotspot

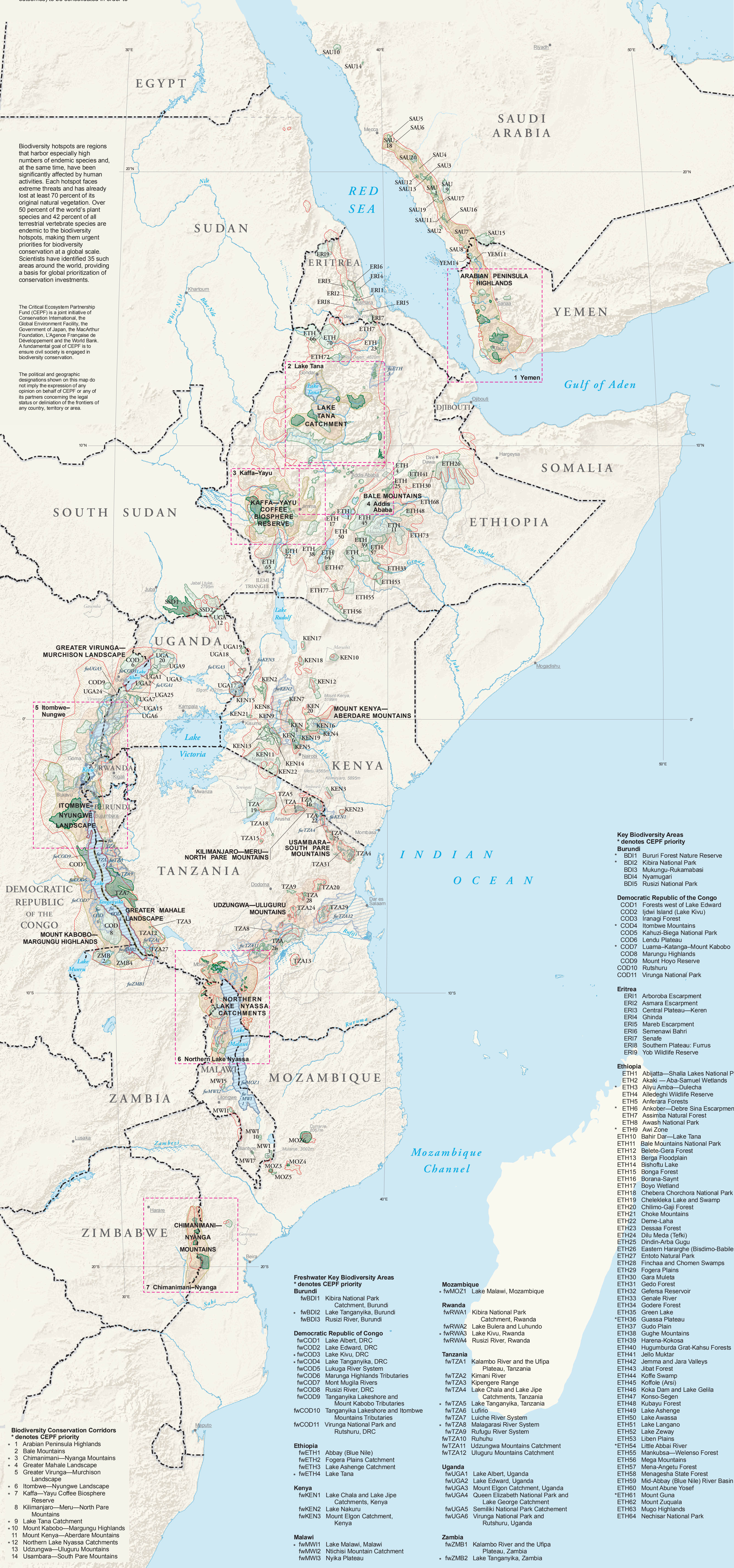
The Eastern Afromontane Biodiversity Hotspot stretches over a curving arc of widely scattered but biogeographically similar mountains. It covers an area of more than 1 million square kilometers running over a distance of more than 7,000 kilometers. The hotspot is remarkable for both its high level of biological diversity and the life-sustaining systems it maintains for millions of people. Characterized by a series of montane 'islands' (including the highest peaks in Africa and Arabia) and extensive plateaus, the hotspot is home to several ecoregions. They include the East African Montane Forests, Southern Rift Montane Forest-Grassland mosaic, the Albertine Rift and the Ethiopian Montane Grasslands and Woodlands, as well as the ecoregions of the Southern Montane 'islands' in Malawi, Zimbabwe and Mozambique. The result is a region suitable for a wide range of vegetation types, with an estimated 7,600 plant species, of which at least 2,350 are endemic, or unique, to the region.

Being so geographically vast, the Hotspot can be split into four regions from north to south: the Arabian Peninsula, the Ethiopian Highlands, the Albertine Rift, and the Eastern Arc and Southern Highlands (including the Kenyan and northern Tanzanian volcanic mountains).

This map depicts geographic priorities for conservation in the Hotspot, showing key biodiversity areas (site-level outcomes) to be protected and corridors (landscape-level outcomes) to be consolidated in order to

prevent biodiversity loss. Key biodiversity areas (KBAs) are sites that are globally significant for biodiversity conservation and are considered actually or potentially manageable for conservation. KBAs contain species that require site-scale conservation to prevent extinction within the next generation: globally threatened species, restricted-range species, and globally significant congregations of species. Corridors are interconnected landscapes of sites, anchored on KBAs, with the rest of the conservation corridor comprising either areas that have the potential to become part of an existing KBA (through management or restoration) or areas that contribute to the ability of the conservation corridor to support all elements of biodiversity in the long term.

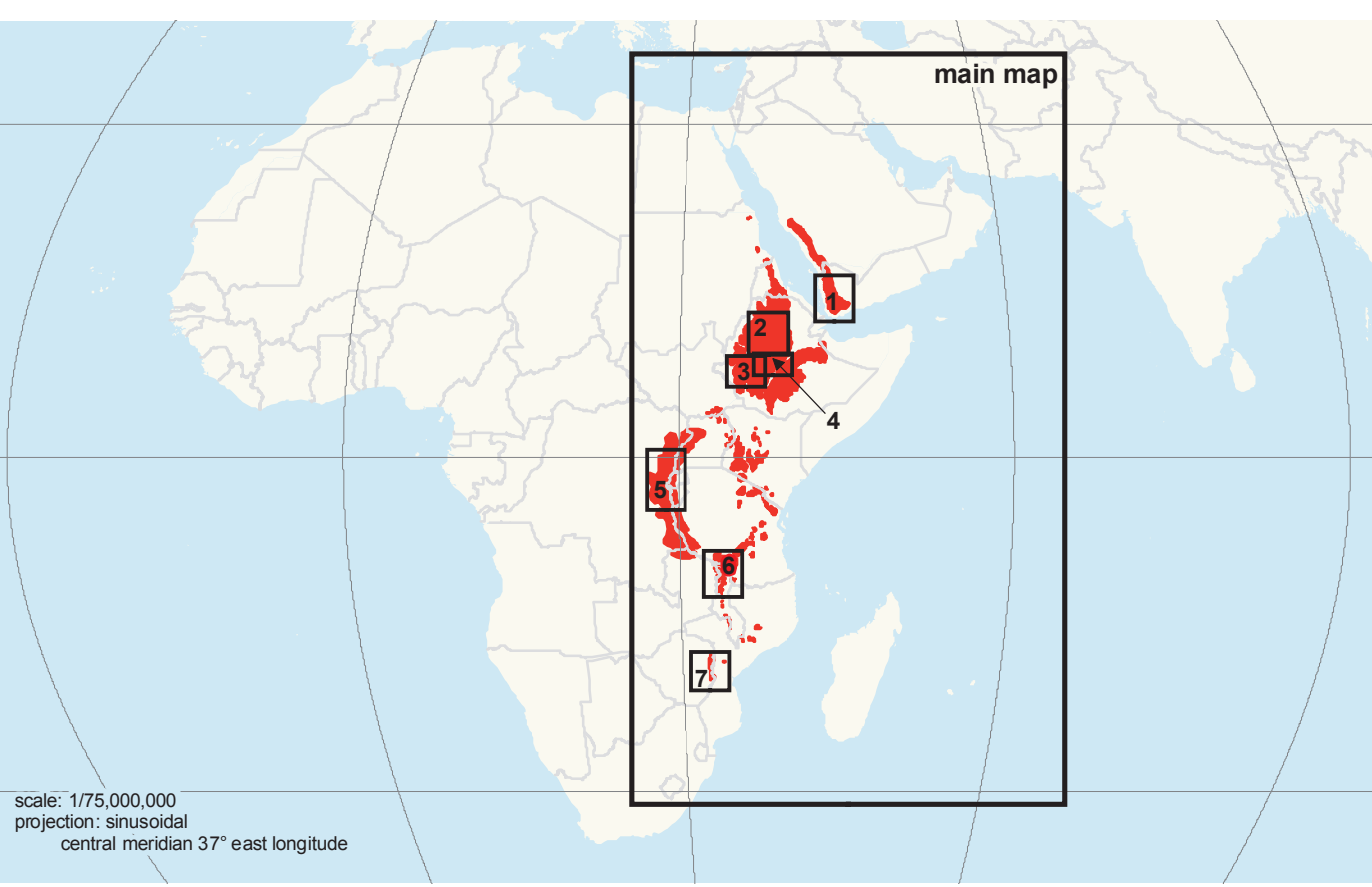
In 2011, a team led by BirdLife International and Conservation International consulted more than 200 stakeholders from civil society, government, and donor institutions to gather and synthesize data on biodiversity, socioeconomic and institutional context, climate change, ecosystem services, and ongoing and planned conservation investments in the 15 countries in the hotspot. This team identified 201 terrestrial KBAs, 40 freshwater KBAs, and 14 corridors, which include representative elements of the Hotspot's 2,350 endemic plant species, 157 endemic bird species, 90 endemic reptile species, 100 endemic mammal species, 100 endemic amphibian species, and 181 globally threatened freshwater fish species.



Conservation Outcomes Eastern Afromontane

29 May 2012
1/7,000,000

CRITICAL ECOSYSTEM PARTNERSHIP FUND



Country	Key Biodiversity Area / Conservation Outcome	Code
Yemen	Arabian Peninsula Highlands	YEM01
	Arabian Peninsula Highlands	YEM02
	Arabian Peninsula Highlands	YEM03
	Arabian Peninsula Highlands	YEM04
	Arabian Peninsula Highlands	YEM05
	Arabian Peninsula Highlands	YEM06
	Arabian Peninsula Highlands	YEM07
	Arabian Peninsula Highlands	YEM08
	Arabian Peninsula Highlands	YEM09
	Arabian Peninsula Highlands	YEM10
	Arabian Peninsula Highlands	YEM11
	Arabian Peninsula Highlands	YEM12
	Arabian Peninsula Highlands	YEM13
	Arabian Peninsula Highlands	YEM14
	Arabian Peninsula Highlands	YEM15
Ethiopia	Abaya-Shalla Lakes National Park	ETH01
	Abaya-Shalla Lakes National Park	ETH02
	Abaya-Shalla Lakes National Park	ETH03
	Abaya-Shalla Lakes National Park	ETH04
	Abaya-Shalla Lakes National Park	ETH05
	Abaya-Shalla Lakes National Park	ETH06
	Abaya-Shalla Lakes National Park	ETH07
	Abaya-Shalla Lakes National Park	ETH08
	Abaya-Shalla Lakes National Park	ETH09
	Abaya-Shalla Lakes National Park	ETH10
	Abaya-Shalla Lakes National Park	ETH11
	Abaya-Shalla Lakes National Park	ETH12
	Abaya-Shalla Lakes National Park	ETH13
	Abaya-Shalla Lakes National Park	ETH14
	Abaya-Shalla Lakes National Park	ETH15
Kenya	Abdera Mountains	KEN01
	Abdera Mountains	KEN02
	Abdera Mountains	KEN03
	Abdera Mountains	KEN04
	Abdera Mountains	KEN05
	Abdera Mountains	KEN06
	Abdera Mountains	KEN07
	Abdera Mountains	KEN08
	Abdera Mountains	KEN09
	Abdera Mountains	KEN10
	Abdera Mountains	KEN11
	Abdera Mountains	KEN12
	Abdera Mountains	KEN13
	Abdera Mountains	KEN14
	Tanzania	Anzisha National Park
Anzisha National Park		TZA02
Anzisha National Park		TZA03
Anzisha National Park		TZA04
Anzisha National Park		TZA05
Anzisha National Park		TZA06
Anzisha National Park		TZA07
Anzisha National Park		TZA08
Anzisha National Park		TZA09
Anzisha National Park		TZA10
Anzisha National Park		TZA11
Anzisha National Park		TZA12
Anzisha National Park		TZA13
Anzisha National Park		TZA14
Uganda		Budongo Forest Reserve
	Budongo Forest Reserve	UGA02
	Budongo Forest Reserve	UGA03
	Budongo Forest Reserve	UGA04
	Budongo Forest Reserve	UGA05
	Budongo Forest Reserve	UGA06
	Budongo Forest Reserve	UGA07
	Budongo Forest Reserve	UGA08
	Budongo Forest Reserve	UGA09
	Budongo Forest Reserve	UGA10
	Budongo Forest Reserve	UGA11
	Budongo Forest Reserve	UGA12
	Budongo Forest Reserve	UGA13
	Budongo Forest Reserve	UGA14
	Democratic Republic of the Congo	Bururi Forest Nature Reserve
Bururi Forest Nature Reserve		COD02
Bururi Forest Nature Reserve		COD03
Bururi Forest Nature Reserve		COD04
Bururi Forest Nature Reserve		COD05
Bururi Forest Nature Reserve		COD06
Bururi Forest Nature Reserve		COD07
Bururi Forest Nature Reserve		COD08
Bururi Forest Nature Reserve		COD09
Bururi Forest Nature Reserve		COD10
Bururi Forest Nature Reserve		COD11
Bururi Forest Nature Reserve		COD12
Bururi Forest Nature Reserve		COD13
Bururi Forest Nature Reserve		COD14
Zimbabwe		Chimanimani-Nyanga Mountains
	Chimanimani-Nyanga Mountains	ZWE02
	Chimanimani-Nyanga Mountains	ZWE03
	Chimanimani-Nyanga Mountains	ZWE04
	Chimanimani-Nyanga Mountains	ZWE05
	Chimanimani-Nyanga Mountains	ZWE06
	Chimanimani-Nyanga Mountains	ZWE07
	Chimanimani-Nyanga Mountains	ZWE08
	Chimanimani-Nyanga Mountains	ZWE09
	Chimanimani-Nyanga Mountains	ZWE10
	Chimanimani-Nyanga Mountains	ZWE11
	Chimanimani-Nyanga Mountains	ZWE12
	Chimanimani-Nyanga Mountains	ZWE13
	Chimanimani-Nyanga Mountains	ZWE14