

CEPF FINAL PROJECT COMPLETION REPORT

Organization Legal Name:	The Little Design Company
Project Title:	Critical Ecosystem Partnership Funded Conservation Projects: Lessons Learned from the Polynesia-Micronesia Biodiversity Hotspot
Date of Report:	22 April 2013
Report Author and Contact Information	Joanne Aitken, jo@thelittledesigncompany.co.nz

CEPF Region: Polynesia-Micronesia

Strategic Direction: SD 2 (KBA Conservation)

Grant Amount: \$70,550.00

Project Dates: Apr 1, 2012-Mar 31, 2013

Implementation Partners for this Project (please explain the level of involvement for each partner):
N/A

Conservation Impacts

Please explain/describe how your project has contributed to the implementation of the CEPF ecosystem profile.

Please summarize the overall results/impact of your project.

Project Approach (500 words)

This project's intention was the efficient, timely and professional production and publication of a Part II series of 15 (minimum 10) lessons learned technical reports. The project actually achieved an output of 16 publications: 26 in the final Series. Particular consideration was given to the collection of sufficient information from authors of each publication to include analysis of data and information. Budget was kept to a minimum due to the reduced overheads of a home based business, plus my commitment and experience in this genre of conservation report production.

This proposal also encompassed the design, development and production of cd-roms, based on the content of all publications in these two Series of Lessons Learned reports. The project aimed to start the discussion re: the web publication of the cd-rom content online under an appropriate domain, featuring all materials gathered and published in a customised interface for optimum usability and searchability. The project actually achieved the creation of a live web portal featuring the whole series (akin to the cd-rom interface): www.thelittledesigncompany.com/cepf. The discussion of the appropriate hosting environment of this resource can continue. This web presence could also in time serve as an online central portal for further Lessons Learned media and studies developed across the Pacific.

Link to CEPF Investment Strategy

This project is specifically in response to the strategic direction 2 (KBA Conservation): to strengthen the conservation status and management of key biodiversity areas, presenting and disseminating significant and influential research projects to a wider audience and thus improve efficiency of conservation strategies in future.

Planned Long-term Impacts - 3+ years (as stated in the approved proposal):

The wide distribution of this series of Lessons Learned publications on a variety of completed biodiversity projects in the Polynesia-Micronesia region will assist future conservation research projects through the sharing of lessons learned on research strategies and application, community, national and regional impact and involvement, and the presentation of results in a thorough, consistent and accessible format. The addition of a distributed cd-rom, featuring the print quality

PDFs, plus all publication content in a searchable format, interlinking the studies and lessons learned (from all Series I and II publications), will enhance the project's outreach. The potential for a future online portal for this multi-media interface, offering an online hub for further related studies would also be invaluable in terms of information sharing, and will allow further and vital development options.

Actual Progress Towards Long-term Impacts at Completion:

Now the project is complete, the distribution of the publication series and cd-roms (featuring full set of 26 publications) has been more extensive than planned, with the addition of being able to hand-deliver and discuss the project outputs in person with many contributors and agencies at the CEPF conference. This has helped spread the word of these Lessons Learned immeasurably, and opened a discussion about the various practical uses of these publications/cds, as well as increasing the distribution to further relevant groups around the Pacific. The cd-rom and the link online to the entire series also highlight additional lessons learned collected and disseminated via the greater CEPF program (included in these is a link to the CEPF site and, specifically, lessons learned from other CEPF-funded projects). I would like to see this enhanced distribution create the opportunity for other projects in the region to highlight their findings in the same (or similar) way, to raise the profile of their important work and assist them in their ongoing work and funding applications.

Planned Short-term Impacts - 1 to 3 years (as stated in the approved proposal):

As above.

Actual Progress Toward Short-term Impacts at Completion:

As above.

Please provide the following information where relevant:

Hectares Protected: N/A

Species Conserved: N/A

Corridors Created: N/A

Describe the success or challenges of the project toward achieving its short-term and long-term impact objectives.

The project outcomes proved to be more comprehensive than I would have hoped: the cooperation and contribution of most of the invited authors was significant, which allowed the project to achieve more than planned. Project leaders were so enthusiastic about their involvement and recognized the benefits of having their projects' findings published and distributed in this way, which allowed me to produce more project publications than anticipated. There were the usual challenges that any large project of this nature faces: e.g. scheduling and reliance on contributor feedback and review, but these were in the most part not unexpected, and did not delay the completion of the project.

Were there any unexpected impacts (positive or negative)?

I did not anticipate the significant added value of being able to meet and discuss this project with many of the contributors. These discussions confirmed that the project's outputs (hard copy publications, cds and online links) would be very useful for the relevant communities, groups and trainees, as a multi-purpose tool: for training and education purposes; promotion and further funding applications and also to assist the engagement and support of local communities as well as government agencies in their important work.

Project Components

Project Components: *Please report on results by project component. Reporting should reference specific products/deliverables from the approved project design and other relevant information.*

Component 1 Planned:

Series of finalised Lessons Learned publications (minimum 10, maximum 15) published and distributed online and in print to all relevant and interested parties and organisations, including all CEPF partners as defined by the RIT.

Component 1 Actual at Completion:

As planned, the second series of **16 publications (more than anticipated)** was published and distributed online (on the cd-rom web portal www.thelittledesigncompany.com/cepf and CEPF site www.conservation.org/publications/Pages/biodiversity_conservation_lessons_learned.aspx) and in print to all relevant and interested parties and organizations, as well as the series being presented to contributors and relevant individuals in person at the CEPF closing workshop in Fiji, April 2013.

Component 2 Planned:

CD-rom design and development: produce an interactive cd-rom based on final published content of all 20–25 reports published in the two Series of Lessons Learned publications, with the possibility of future online publication of this multi-media interface.

Component 2 Actual at Completion:

As planned, the interactive cd-rom featuring **26 publications** in the series was produced and distributed in cd format and also via the cd-rom web portal (www.thelittledesigncompany.com/cepf) to all relevant and interested communities. The web portal has already been launched and could easily be 'moved' to a more relevant hosting environment as appropriate following further discussion with CEPF.

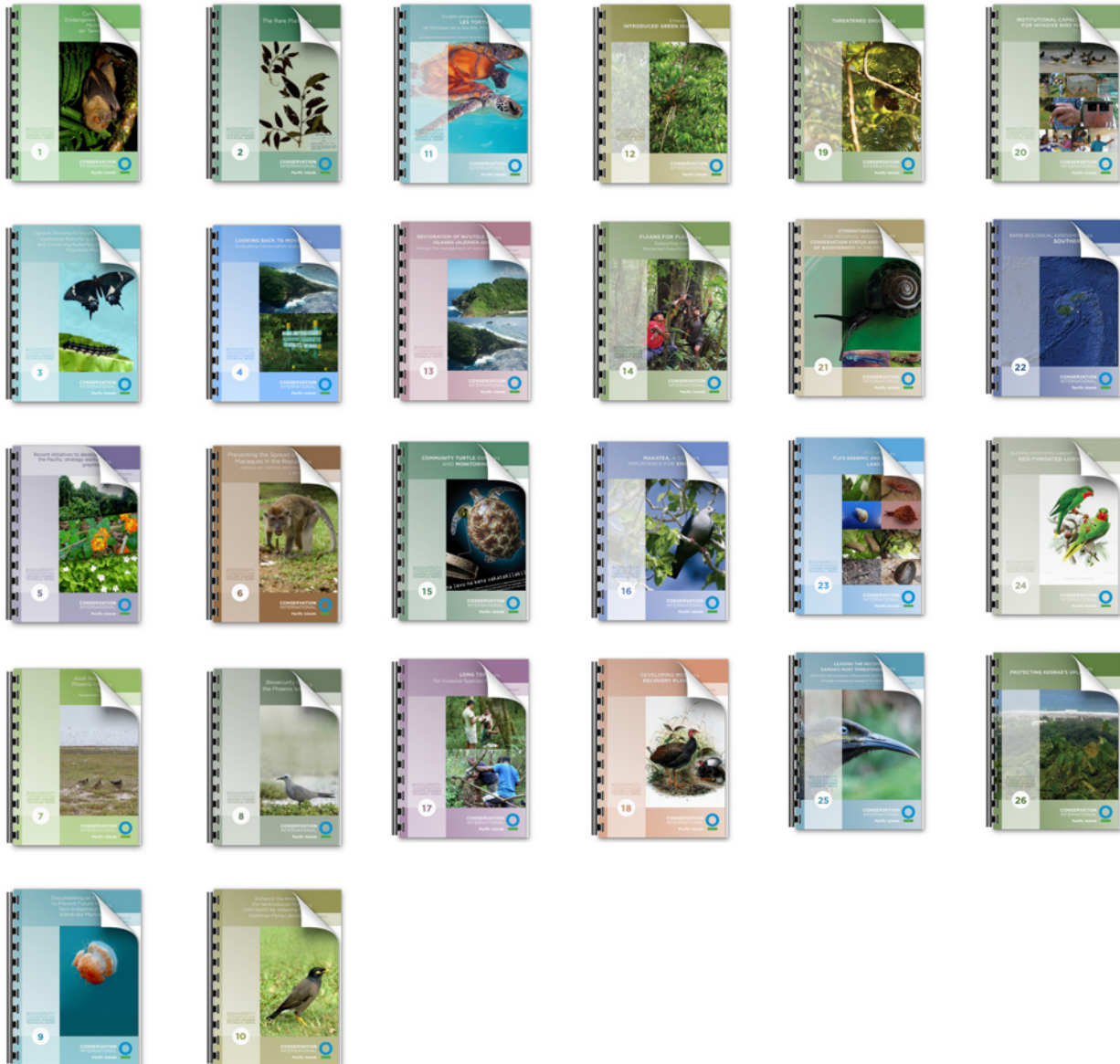
Were any components unrealized? If so, how has this affected the overall impact of the project?

N/A

Please describe and submit (electronically if possible) any tools, products, or methodologies that resulted from this project or contributed to the results.

1. **CD-Rom Web portal** (all cd-rom interactive content, featuring 26 publications in series): <http://www.thelittledesigncompany.com/cepf/>
2. **CEPF Lessons Learned web page (26 pdfs):** www.conservation.org/publications/Pages/biodiversity_conservation_lessons_learned.aspx
3. **Hard copies printed and distributed** (by freight, post and in person): 50 hard copies of each of the 16 publications in this second Lessons Learned series.
4. **CD-roms created and distributed** (by freight, post and delivered in person): 300 cd-roms





Lessons Learned

Describe any lessons learned during the design and implementation of the project, as well as any related to organizational development and capacity building. Consider lessons that would inform projects designed or implemented by your organization or others, as well as lessons that might be considered by the global conservation community.

Many lessons were learned throughout this project, mostly around the difficulty of predicting schedule, contributor availability and response time for publication review. Also there were unforeseen hiccups in the production schedule due to various other factors, although these proved to have no significant negative impact. This just meant that the final quarter was more intensive than anticipated.

Project Design Process: (aspects of the project design that contributed to its success/shortcomings)

At the planning stage there was an emphasis on liaising as much as possible with project leads (and report authors) for feedback and draft review before final printing and online output of the reports: this proved as important as anticipated. However, at the time of project planning, one oversight was the importance of meeting with the many contributors face to face: to find out how these publications and cds/online files can help their continued project work. This was a positive and productive addition in the latter stages of the project.

Project Implementation: (aspects of the project execution that contributed to its success/shortcomings)

On distribution of the final product to the project contributors and supporting agencies, it became apparent that these resources are highly useful, not only for sharing with interested communities and conservation trainees, but also for supporting their continued work in their field: for use while lobbying local agencies and for funding applications. Each group has different needs and uses for these: if similar publications are produced in future, it will help to consult with each project group to find out how many hard copies they want to distribute and build the print plan around those specifics. Many have asked for additional copies of their own report, and I am happy to help facilitate that if required. Quality printing can be costly with small-run print projects but through this project I have gathered a list of excellent suppliers, and will be able to find the most cost-effective solution for all.

Not a new lesson learned, but a lesson *reiterated*: As with any publication project, there are always small errors that can slip through the gaps, even following the multiple planned review and proof-reading stages in this complex project. I don't think that any additional time would have helped avoid this entirely (more often than not, extra time does not always equal extra clarity!), but at least with this project we have the opportunity post-print to revise the online versions as required (on the cd portal and CEPF web page for the Series).

Other lessons learned relevant to conservation community:

Additional Funding

Provide details of any additional funding that supported this project and any funding secured for the project, organization, or the region, as a result of the CEPF investment in this project.

Donor	Type of Funding*	Amount	Notes
N/A	N/A	NIL	

****Additional funding should be reported using the following categories:***

- A*** *Project co-financing (Other donors or your organization contribute to the direct costs of this project)*
- B*** *Grantee and Partner leveraging (Other donors contribute to your organization or a partner organization as a direct result of successes with this CEPF funded project.)*
- C*** *Regional/Portfolio leveraging (Other donors make large investments in a region because of CEPF investment or successes related to this project.)*

Sustainability/Replicability

Summarize the success or challenge in achieving planned sustainability or replicability of project components or results.

By adding the online/web element to this project's outcomes, this publication series can be edited and enhanced as the opportunity arises: I would like to see the series evolve and grow over the next few years. The hard copy publications and cd-roms can continue to be shared and distributed among relevant communities and individuals, and the [cd-rom's web portal](#) and [CEPF page for this series](#) can both be shared even further afield to inform and assist future interested communities. This will hopefully raise the profile of these projects even more, and also invite additions to the series in future, to add to the projects and lessons learned already promoted and published in this way.

Summarize any unplanned sustainability or replicability achieved.

Safeguard Policy Assessment

Provide a summary of the implementation of any required action toward the environmental and social safeguard policies within the project.

Additional Comments/Recommendations

I have been overwhelmed by the great contribution of the project authors to help complete this series, as well as by the positive feedback following its distribution. It's heartening to know that having their projects professionally presented in this way can help strengthen each group's efforts to continue their work and spread the word of their findings and recommendations to local and national communities.

The only downside of the project was that we did not have the time or funds to include *more* of the many CEPF-funded projects in this publication/cd/online series, but hopefully we will be able to do so in time...

Information Sharing and CEPF Policy

CEPF is committed to transparent operations and to helping civil society groups share experiences, lessons learned, and results. Final project completion reports are made available on our Web site, www.cepf.net, and publicized in our newsletter and other communications.

Please include your full contact details below:

Name: Joanne Aitken

Organization name: The Little Design Company

Mailing address: 2 Southern Cross Crescent, Island Bay, Wellington 6023, New Zealand

Tel: +64 4 383 8278

E-mail: jo@thelittledesigncompany.co.nz

*****If your grant has an end date other than JUNE 30, please complete the tables on the following pages*****



CEPF Global Targets

(Enter Grant Term)

Provide a numerical amount and brief description of the results achieved by your grant.
Please respond to only those questions that are relevant to your project.

Project Results	Is this question relevant?	If yes, provide your numerical response for results achieved during the annual period.	Provide your numerical response for project from inception of CEPF support to date.	Describe the principal results achieved from July 1, 2007 to June 30, 2008. (Attach annexes if necessary)
1. Did your project strengthen management of a protected area guided by a sustainable management plan? Please indicate number of hectares improved.	Indirectly			Note: indirect gains through the sharing of region-wide lessons learned from other related or similar projects.
2. How many hectares of new and/or expanded protected areas did your project help establish through a legal declaration or community agreement?	No			
3. Did your project strengthen biodiversity conservation and/or natural resources management inside a key biodiversity area identified in the CEPF ecosystem profile? If so, please indicate how many hectares.	Indirectly			Note: indirect gains through the sharing of region-wide lessons learned from other related or similar projects.
4. Did your project effectively introduce or strengthen biodiversity conservation in management practices outside protected areas? If so, please indicate how many hectares.	Indirectly			Note: indirect gains through the sharing of region-wide lessons learned from other related or similar projects.
5. If your project promotes the sustainable use of natural resources, how many local communities accrued tangible socioeconomic benefits? Please complete Table 1 below.	No			

If you answered yes to question 5, please complete the following table

Table 1. Socioeconomic Benefits to Target Communities

Please complete this table if your project provided concrete socioeconomic benefits to local communities. List the name of each community in column one. In the subsequent columns under Community Characteristics and Nature of Socioeconomic Benefit, place an X in all relevant boxes. In the bottom row, provide the totals of the Xs for each column.

Name of Community	Community Characteristics							Nature of Socioeconomic Benefit														
	Small landowners	Subsistence economy	Indigenous/ ethnic peoples	Pastoralists/nomadic peoples	Recent migrants	Urban communities	Communities falling below the poverty rate	Other	Increased Income due to:					Increased food security due to the adoption of sustainable fishing, hunting, or agricultural practices	More secure access to water resources	Improved tenure in land or other natural resource due to titling, reduction of colonization, etc.	Reduced risk of natural disasters (fires, landslides, flooding, etc)	More secure sources of energy	Increased access to public services, such as education, health, or credit	Improved use of traditional knowledge for environmental management	More participatory decision-making due to strengthened civil society and governance.	Other
									Adoption of sustainable natural resources management practices	Ecotourism revenues	Park management activities	Payment for environmental services										
Total																						

If you marked "Other", please provide detail on the nature of the Community Characteristic and Socioeconomic Benefit: