



NatureKenya
Connecting nature & people

nature net

at the Nairobi Arboretum's
Tree Centre

Arboretum Centennial
lecture:

Chin Ong

(from World Agroforestry Centre)

**Bamboos for
biodiversity, environment
and livelihoods**

Thur 31 May 5:30 p.m.

(Entrance fee 100 Shillings, students free.
Coffee and tea is served from 5 pm.
Guarded parking space provided)



www.worldmigratorybirdday.org

World Migratory Bird Day

12 - 13 May

This global event is devoted to the beauty of migrating birds and their conservation. This year, the immense threats to migrating birds caused by climate change will be its main focus. Climate change has severe consequences for these nomads of the skies: it causes the loss of essential bird habitats, changes migration patterns and increases the competition for food between migrating birds and residents.

Join us in celebrating World Migratory Bird Day 2007 with Site Support Groups May 12th:

Kereita Environmental Volunteers

Birding at the Bathi dam, procession through Kimende town, tree planting, talks and a video. Meet at 8.30 a.m. at the old Kijabe Environment Volunteers office at Kimende town. Refreshments will be served after the event

Arabuko Sokoke Forest Guides Association

Birding excursion to Arabuko Sokoke Forest and Mida Creek. Meet at the Kenya Wildlife Service Visitor Centre, Gede at 6.30 a.m.

Friends of Kinangop Plateau Magumu/Nyakio and Njabini

Birding excursion and talks at Semini's Dam 9.00 a.m. meet at Kinamba Shopping Centre Refreshments will be served after the event

May 13th:

Arabuko Sokoke Forest Guides Association

Birding excursion to Sabaki River mouth

8:00 am: participants from Mombasa and Watamu meet at the Gede/Watamu junction Mobil petrol station. 9:00 am: all participants convene in Malindi at the Total petrol station roundabout, Lamu road Contact Jonathan 0724440374, David 0734652610

**Friends
of Nairobi
Arboretum
Annual General
Meeting:**



Sat 5 May 11:00a.m.

at the Arboretum Tree Centre

Annual General Meeting

of the East Africa Natural
History Society

Tuesday 8 May, 4:00 p.m.

at the Louis Leakey Hall,
National Museums, Nairobi

Don't miss this most talked-about film to feature immediately after the AGM

An Inconvenient Truth

Former Vice President of the United States Al Gore, in a persuasive argument on global warming.

With short analysis of the Kenya situation by former UNEP Chief of the Atmosphere Programme - Peter Usher

Bring along a friend!

Stay on for Bar-be-que
and drinks (cash bar)

Contributions to the tea table
most welcome!

Thank you to our Corporate
members for their very valuable
support

Welcome
new member:
Woburn
Residence Club



Desk-top!

Can you place Nature Kenya
subscription forms at your
office or shop?- we'd be
pleased to hear from you!

MAY AT A GLIMPSE

THU 3	SAMAKI OUTING
SAT 5	FONA AGM
TUES 8	EANHS AGM
SAT 12	TREE WALK & HIKING DAY
SAT 12 & 13	UMBOD CELEBRATIONS
SUN 20	SUNDAY BIRDWALK
MON 28	TREE WALK
THU 31	BAMBOOS WITH CHIN ONG
BIRDWALKS EVERY WEDNESDAY MORNING	
BIRD RINGING EVERY THURSDAY MORNING	

Editorial Team

Editor Catherine Ngarachu
Evening Skies Fleur Ng'weno
Naturalist Dino Martins
Action Serah Munguti

**Namanga Trip
Fri 1st to Sun 3rd June**

Hiking, birdwatching and learning about amphibians around the Ol Donyo-Orok hills. Camp by the hills. Bring tent, sleeping bag,

good walking shoes, water bottle, a hat and guide book.

Cost KShs. 2000/- per person which includes food, camping fees and transport. Please carry a packed lunch for 1st June.

**From Nairobi: Nature Day out
Sat 12 May**

Meet at 7.30 a.m. at the National Museum car park (near the Langi Langi cafeteria). Transport by car pool. Cost 500/- per person, 250/- children under 12yrs

Book by Tuesday 8 May and bring a packed lunch, water, hat and KWS Smart Card



New hope for Dakatcha Woodlands

Photo: by Alex Ngari
Alex Ngari
 Biodiversity Database Manager,
 Nature Kenya

Located in the remote hinterlands of Malindi, this Important Bird Area has so far received little conservation attention despite its importance. Field surveys to Dakatcha Woodlands conducted by Nature Kenya and collaborating organisations confirmed the intense pressure from human activities on this site. In this woodland is found the globally threatened Clarke's Weaver *Ploceus golandi* that is thought to breed here. The only other site hosting the Clarke's Weaver is the neighbouring Arabuko-Sokoke Forest Reserve,

but no breeding sites for this bird have been discovered there.

Funding secured from the Critical Ecosystems Partnership Fund (CEPF), will allow Nature Kenya to undertake a two-year programme to build the capacity of the local community to engage in active conservation to sustainably manage this natural area.

Leading threats at Dakatcha include encroachment, lack of favourable alternatives for earning a living and a fierce demand for charcoal and timber from the nearby urban centres.

BIOTA Football Tournament Cup at Kakamega Forest

Joel Siele
 Conservation Programme Officer
 Nature Kenya

From the 10 teams who registered for the BIOTA Football Tournament, the Football Clubs Buyangu and Bulchaywa made it to the finals held on 25 March 07 at Buyangu Primary School playing ground. The tournament provides a means to engage the support of local communities on issues pertaining to the conservation of Kakamega Forest.



Bulchaywa Football Club won 3 goals to nil

There were more than 2000 people who came to cheer their favorite team on the finals. Besides Nature Kenya there were also representatives from Kakamega Environmental Education Programme (Buyangu Branch members), Provincial Administration, Kenya Wildlife Service and Media (Radio Citizen). To wind up the day more than 400 tree seedlings were issued to players and local residents.

Appeal: This tournament was sponsored by Robert Gliniars who is doing research on plants in Kakamega Forest. If you can sponsor or help to find sponsorship for next years' (2008) tournament please contact the Nature Kenya Conservation Programme.

HELPING WITH WATER CONSERVATION

ABSORBER

WATER RETAINERS FOR FORESTRY & TREE CROPS
LAWNS & GARDENS HORTICULTURE & FLORICULTURE

- Increases the Water Holding Capacity of soils for several years
- Improves the physical properties of soils through aeration
- Enhances plant growth through continuous availability of water and nutrient in the root zone for optimal absorption by plants

- Reduces evaporation from the soil
- Limits losses of water and nutrient due to leaching
- Protects the environment against drought and groundwater pollution
- Irrigation frequency may be reduced by 50%

• Degrades naturally in soils

Organix Limited
The Farmer's Environmental Friend

P. O. Box 1449
 Nairobi, 00800 Kenya
 Tel: +254 20 3741482 Fax: +254 20 3742600
 e-mail: info@organix.co.ke www.organix.co.ke

Resource centres Open to the Public

The Kikuyu Escarpment and Kinangop Resource centres are now open to the public.

The Kikuyu Escarpment Centre is near completion and the Kijabe Environmental Volunteers (a Nature Kenya Site Support Group) have started an environmental education and awareness programme at the centre. More than 700 community members have benefited and more than sixty children have visited since the centre was opened in December

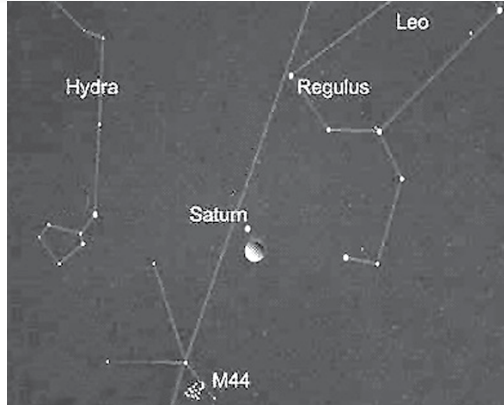
2006. In April this year KENVO moved their offices to the centre.

At Kinangop, the Resource Centre opened in February 2007. Before the current school holidays, more than one hundred children had visited the centre, and received environmental education through talks, videos and interactive sessions. The two centres are

looking forward to a very busy time when schools re-open in May.

The European Union Biodiversity Conservation Programme funded the construction of both resource centres.

Evening Sky May 2007 Ian Mackay and Fleur Ng'weno



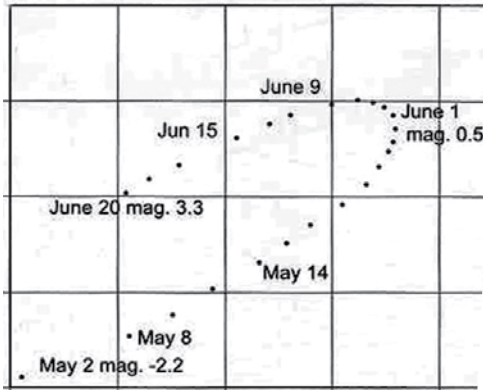
Moon phases, May 2007

Full moon - 2 May; Last quarter - 10 May;
New moon - 16 May;
First quarter - 23 May

Planets' magnitude, May 2007

Magnitude is the observed brightness of an astronomical object. Higher values are less bright than lower values. Values are often negative for the bright inner planets. Planets are listed according to their distance from the sun.
Mercury -2.2 to 0.5; Venus -4.1 to -4.3; Mars 1.0 to 0.8; Jupiter -2.5 to -2.6; Saturn 0.5;

Planets, May 2007



Mercury is in the evening sky, low over the sunset. It appears brightest on May 2nd and rises higher during the whole of this month and the first week of June. Mercury seems to move around a lot in a short time. The diagram shows the curve of Mercury's path while in the evening sky in May and June 2007.

Venus is low in the west in the evening, and can be seen for only a few hours. On May 19, Venus stands right between the stars Castor and Pollux in the constellation Gemini. On both the 19th and 20th Venus is spectacular near the Moon.

Mars is only visible in the morning at a magnitude of 1.0 (rather faint).

Saturn is high in the sky at sunset, west of the constellation Leo the Lion. The star cluster M44 is just below Saturn. It is best seen through binoculars. On May 22 the Moon passes within one degree of Saturn (only 35 seconds south).

Jupiter rises in the east at sunset and can be seen all night. On May 5, Jupiter, the Moon and the reddish star Antares in the constellation Scorpius are very close to each other.

May Stars

Very bright stars include Sirius and Canopus, now setting in the southwest; orange-coloured Arcturus high in the northeast; blue-white Spica overhead; and two stars of the Centaur near the Southern Cross. On May 28 the moon is just south of Spica.

In the northern sky, below Arcturus and Leo, is the constellation of the Plough or Big Dipper. Look for the shape of a box with a long handle.

In the southern sky is the small constellation of Crux, the Southern Cross. East of the cross are the two bright stars of the Centaur. The Milky Way, a pale band of millions of stars, stretches across the southern sky.

The constellation Scorpius the scorpion is rising, low in the east. On May 4, the moon occults its reddish star Antares. That is, the moon passes between us and Antares.

In the first week of May, the Earth passes through an area of dust and rocks in space. Some of the dust and rock may fall into the Earth's atmosphere and burn up, forming meteors or "shooting stars".

CLASSIFIEDS

Reach over 1000 members by advertising in Nature Net Rates for Classifieds: • Up to 25 words 250/- • Up to 50 words 500/- Ads • @ 1750/- • with image +500/-

PLANT INDIGENOUS TREES AND SHRUBS

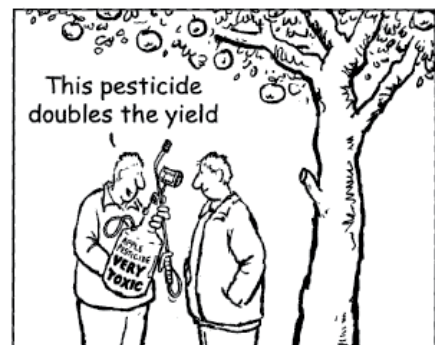
ATTRACT WILDLIFE
FANTASTIC SELECTION OF OVER 100 SPECIES TREES AND SHRUBS, 1-2M IN LARGE POLYPOTS.

"LANDSCAPE" TREES &
YELLOW NANDI FLAMES AVAILABLE
CONTACT FOR TREE LIST, ADVICE & DIRECTIONS :

Trees can be delivered CROPWATCH LTD
TREE NURSERY

_BRIAN WILLIAMS
0733 923990
bvwilliams@swiftkenya.com
CAROLE HEMMINGS
chemmings@zamnet.zm

For more information on how to get your copies and privilege card call:
Tel: 020 3754748 • 3747258 • 3745726
Cell: 0733 732239 • 0720 959749
E-mail: goplaces@swiftkenya.com
Website: www.goplaceskenya.com



For more Chris Madden cartoons buy his book "The Beast that ate the Earth" from his website



www.chrismadden.org

UP & ABOUT

DECLARATION

NATURE KENYA DOES NOT ACCEPT ANY RESPONSIBILITY WHATSOEVER IN RESPECT OF NEGLIGENCE OF ANY OF ITS STAFF, VOLUNTEERS OR MEMBERS ORGANISING THE OUTINGS/TRIPS OR FOR ANY LOSS, INJURY, DEATH OR DAMAGE TO PROPERTY.

GREAT FACILITIES & GREAT DISCOUNTS FOR MEMBERS!

KINANGOP GUEST HOUSE

Perched on the Kinangop Plateau with incredible views across the Rift Valley, the farm combines tussock-grass pasture, indigenous forest, and attractive gardens. The guesthouse is comfortable and fully furnished. Visitors can enjoy hikes and walks on the farm or go further afield with local guides.

For more information, brochure and non-member rates please contact Nature Kenya. Guest House rates: Day visit 350/-
MEMBER nos Overnight Weekend
1 to 2 pax 4000/- 6500/-
3 pax 4,900/- 7,400/-
4 pax 5,800/- 8,300/-

20% OFF ACCOMMODATION AT THE DRIFTWOOD, MALINDI

On presentation of your membership card, you can get this discount off accommodation (if paying by cash or cheque) at the Driftwood Beachclub. This is a charming beachfront property with great food and service. Contact: gm@driftwoodclub.com or tel 042 20155

BIRDWALKS

WEDNESDAY MORNING BIRDWALKS

Bird watching walks at sites in and around Nairobi. Meet at the National Museum car park near Langi Langi cafe, every Wednesday at 8:45 a.m. Return about 12:30 p.m. Those who are not members can get temporary membership at Ksh 100 per birdwalk, payable on arrival at the car park.

SUNDAY BIRDWATCH

Members meet at the National Museum, Nairobi car park near Langi Langi cafe at 9:00 a.m. the third Sunday of every month, i.e. **20 MAY '07**. The members decide where to go. Bring lunch

KINANGOP BIRDING

Friends of Kinangop Plateau organise birdwalks every third Friday of the month i.e. **18 MAY '07** at 9:00 a.m around Magumu and Njambini areas. To participate contact Bakari Ng'ang'a on 0721 470215

FFJ BIRDWALK (Coast)

Friends of Fort Jesus birdwalks are held the third Saturday of each month, i.e. **19 MAY '07**. Please call Marlene Reid on 2491648 or 0720 949195 to confirm

TREE WALKS

Guided tree walks in the Arboretum on the second Saturday and last Monday, i.e. **12** and **28 MAY '07** from 9:30 a.m. Meet at the Arboretum gate. Those who are not members of FONA or Nature Kenya pay Ksh 100/- fee on arrival at the gate.

BIRD RINGING

Meet at the Museums' Nairobi Botanic Garden, at 7:00 a.m. every Thursday.

ARABUKO-SOKOKE (Coast)

The Saturday birdwatch with the Arabuko Sokoke Forest Guides Association is on the first Saturday of each month i.e. **5 MAY '07**, at **6:30 a.m.** from the Visitor Centre, Gede. Cost 100/- per person. KWS fees now apply (100/- Citizens, 500/- Residents)

LAKE VICTORIA SUNSET BIRDERS (Kisumu)

The Lake Victoria Sunset Birders organise bird walks at sites in and around Kisumu every Friday of the month. For further details call 057 42952 or 0734 994938 or email lakevictoriasunsetbirders@yahoo.co.uk

MT KENYA BIODIVERSITY CONSERVATION GROUP (MKBCG)

The MKBCG organise bird walks to sites around Naro Moru every last Saturday of the month i.e. **26 MAY '07**.

For more information contact 0722 364904, 0733 937115 or 062 62071 Email: mt_kebio@yahoo.co.uk

MARURA NAROK BIRDWATCHERS

A community group near Uaso Narok Swamp, Rumuruti, which organises birdwalks every last Saturday i.e. **26 MAY '07**. Call 062 32718 or email olmaisor@africaonline.co.ke

NGONG ROAD FOREST WALKS

Ngong Road Forest Sanctuary Trust nature walks held the first and third Saturdays of the month i.e. **12 & 19 MAY '07**, at **9:00 a.m.** Meet at the stairs leading to the Restaurant at the Racecourse. Call Ignatius ;to confirm on 3875207 or 0720 976299.

SAMAKI DAYS

Guided fish excursions on the first Thursday, i.e. **3 MAY '07** from 9:00 a.m - 12:30 p.m. Meet at the Nairobi Museum car park. Pay Ksh 50/- per person on arrival

Yes! Start my Nature Kenya membership

Surname _____
First Name _____
Ms/Mr/Title _____
Address _____
Tel _____
Mobile _____
Email _____

MEMBERSHIP TYPEs (Choose one)

	Ksh Per Year	
Full	1,000	<input type="text"/>
Sponsor	3,000	<input type="text"/>
Family	1,400	<input type="text"/>
Corporate	10,000	<input type="text"/>
Corporate Plus	20,000	<input type="text"/>

Send cheque or money order to NATURE KENYA, Box 44486 GPO, 00100 NAIROBI