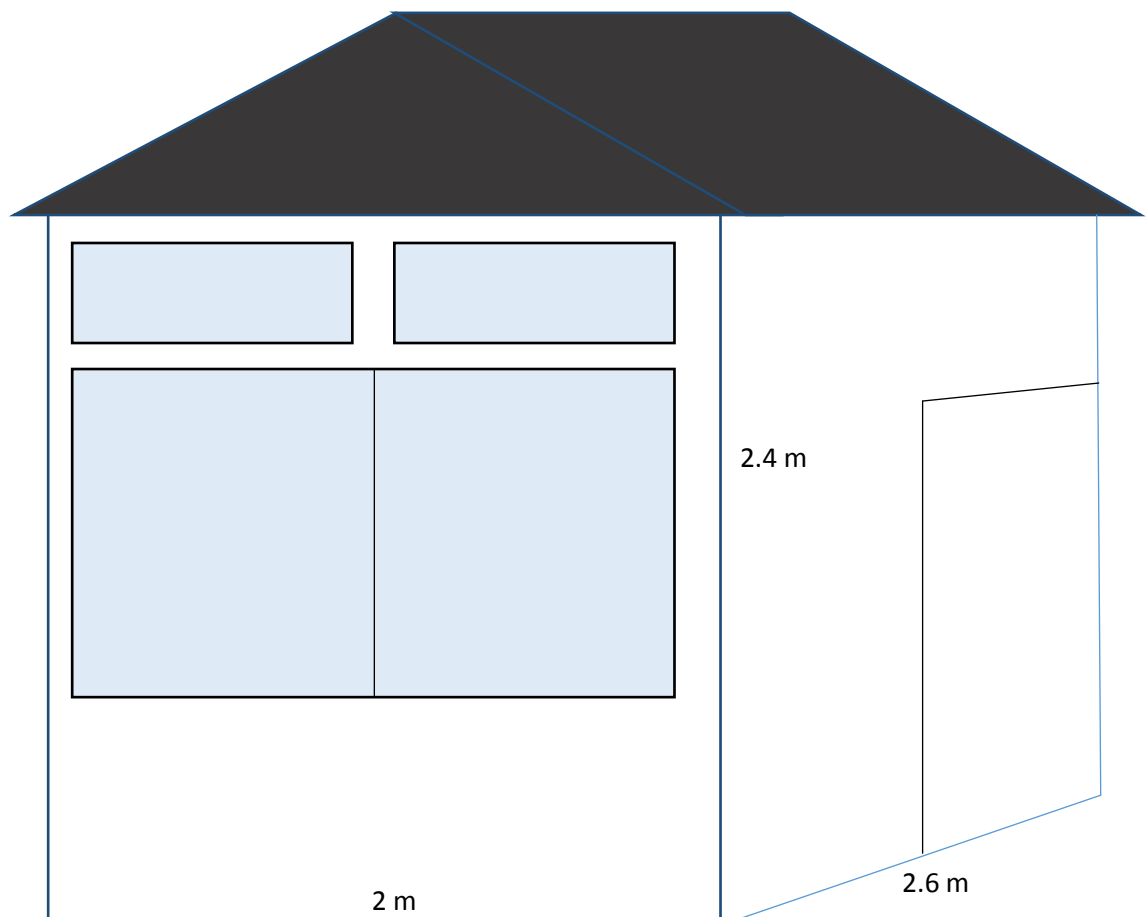


Environmental Impact Assessment for the construction of the tourism office in the KBA of Narta Lagoon

1. Background

This Environmental Impact Assessment (EIA) is prepared for the construction of the tourism office in the Key Biodiversity Area (KBA) of Narta Lagoon, under the CEPF founded project "Land of Eagles and Castles" implemented by the association for Protection and Preservation of Natural Environment in Albania (PPNEA) in partnership with Bulgarian Society for Protection of Birds (BSPB), member of Birdlife International.

2. Details of the object to be constructed



The surface of the object will be 5.2 m². The volume will be: 12.48 m³. The object will be constructed entirely from wood. The windows will be made of glass. It will be covered from

water resistant materials. The object will be placed over a concrete platform with the exact surface of the object (5.2 m²).

3. Details of the venue where the object will be placed

The object will be placed in a venue along the main entrance to the KBA, which currently serves as a parking for cars.

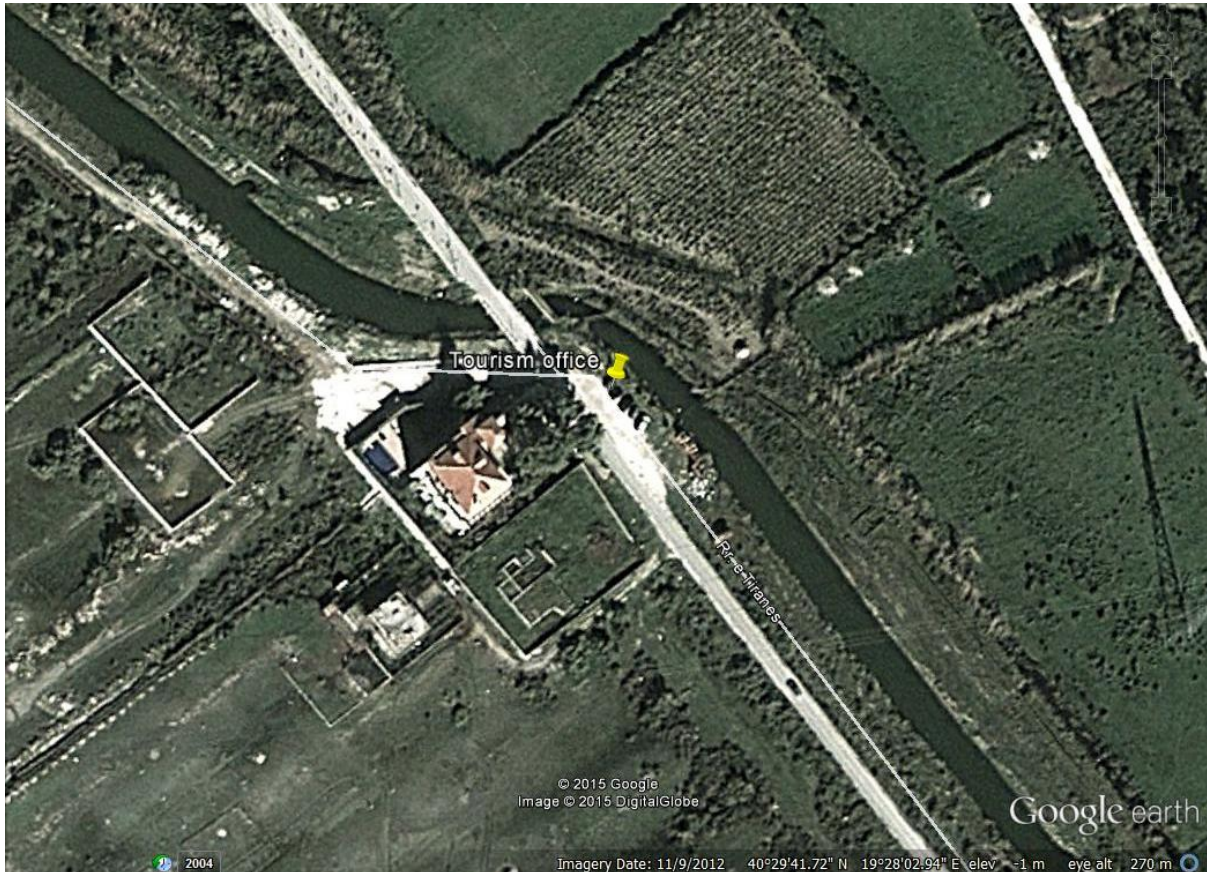


Fig 1. Point where the object will be placed.

4. Environmental Impact Assessment

For the construction of the environmental office there will not be significant intervention in the physical environment. No excavations will be made and no vegetation is going to be removed. The only intervention will be: putting one layer of concrete (5.2 m²) over the already bare ground, over which will be placed the wooden object. The tourism office is not going to produce any solid or liquid wastes. In the area around the tourism office will be planted some trees, which are expected to have a good impact on song birds.

No negative impact in the environment is assessed to bring the construction of the tourism office in the above described site.