

Empowering women in conservation

Because conservation is important for the well-being of women and their families, **women:**



can be powerful and motivated advocates for conservation



can inform conservation efforts about how their communities depend on natural resources



should have the right to be involved in decisions that affect the resources they depend on.

This is not just a "women's issue"

Men & women can work together as partners to inform, develop, and implement solutions that are important for their communities

Men can be "**gender champions**" that support women & help build their capacity to work in conservation

Men, women, & children can benefit from gender mainstreaming in conservation

Women can be effective agents of change, including in:

Research

Monitoring

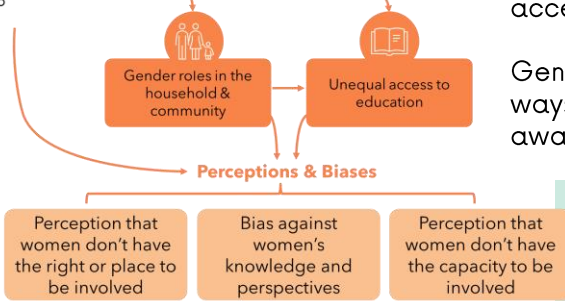
Organizing communities

Raising awareness

Advocacy

Generating funds

Gender norms:
Social expectations about what the different genders can & should do



Gender norms shape the roles that women take + their access to education and opportunities

Gender issues are rooted deeply in social & traditional ways of being; changing them requires time, trust, and awareness of the social context.

Key principles

Context sensitivity

Do No Harm

Intersectionality

Meaningful participation

Gender mainstreaming includes working for gender equity in different institutions:



CONSERVATION ORGANIZATIONS (NGOs, CSOs)



COMMUNITIES



AUTHORITIES, DECISION-MAKERS above village level

CAUTIONS!

A common issue that comes up when projects work to engage women is an increase in conflict in households.



Be sensitive to this! Engage husbands, families, & communities to help them understand & support women's involvement, and make it easier for women to participate while maintaining household activities

Consider the additional burden (time, energy, risk) your project expectations might put on women



Assess these risks & additional responsibilities, and work with community members to minimize these impacts!

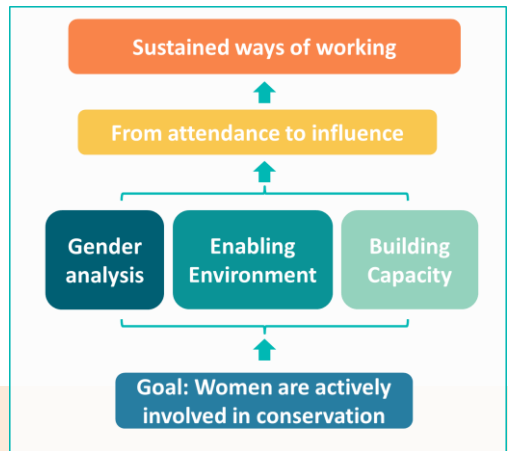
Working on gender requires
TRUST
SENSITIVITY
MONITORING OF IMPACTS
TIME

It is a **big effort**

- Incorporate gender equality as a goal in each project
- Coordinate gender goals, strategies, & activities across different activities, long-term
- Try to collaborate or consult with groups that have experience working on gender issues

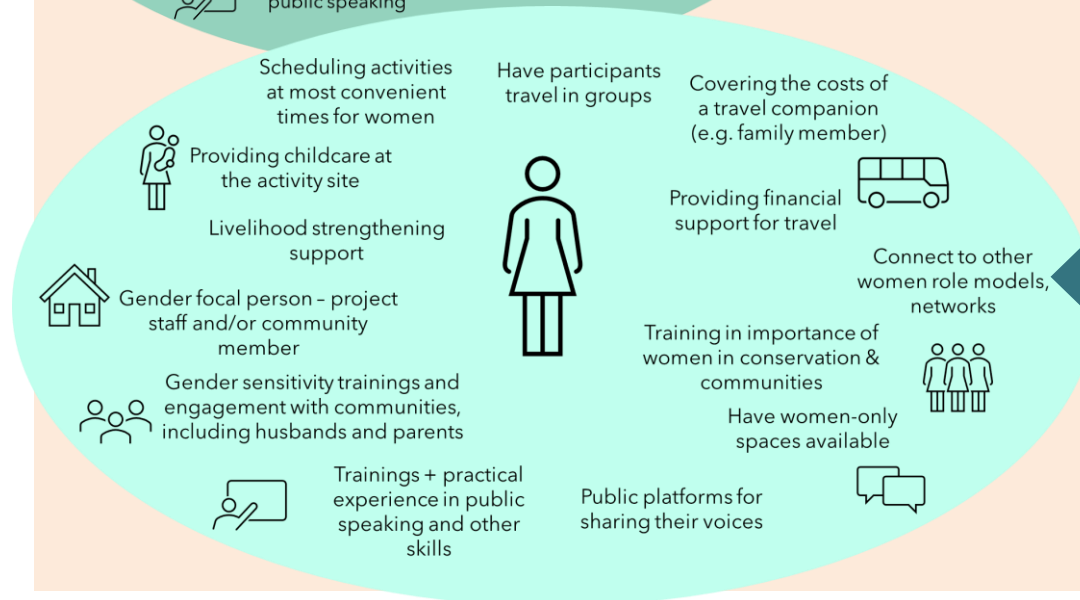
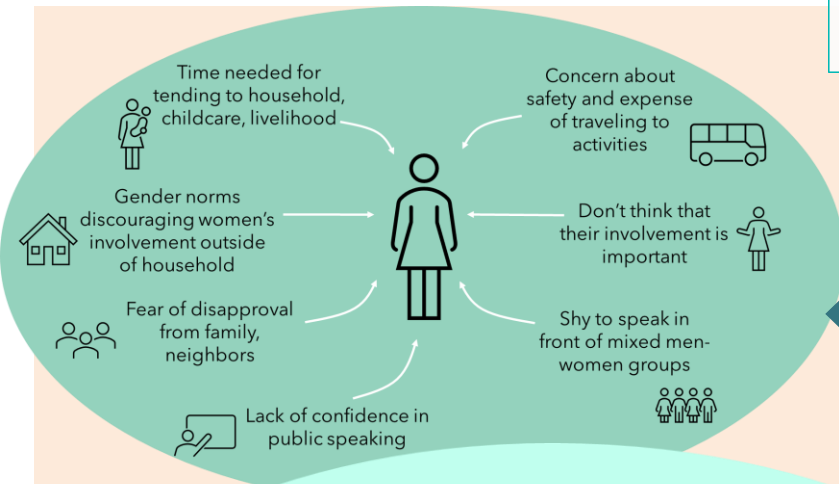
Empowering women in conservation

This framework can help guide you in thinking about gender mainstreaming in your projects & organizations



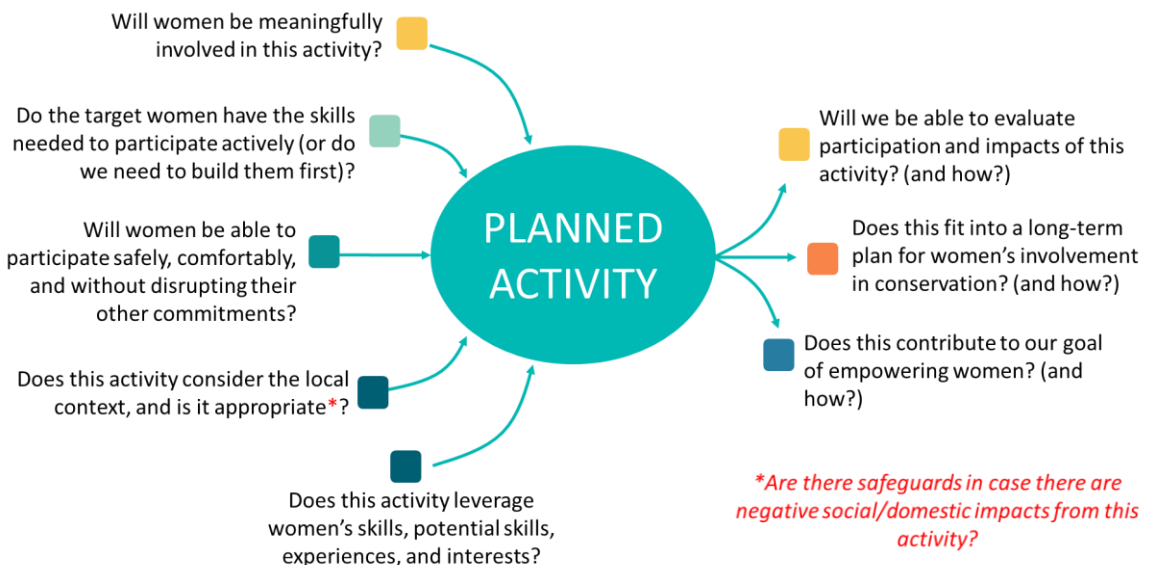
You can use EMPATHY to help you mindfully assess how your project supports women along this framework

Consider the experiences & perspectives of women, and how this influences their access to conservation involvement...



...and how you can work to reduce barriers to their involvement in conservation

Using the framework to think through important questions about how your work will involve & impact women:



**Are there safeguards in case there are negative social/domestic impacts from this activity?*