

CEPF Proposal  
Development Workshop  
4-5 June 2024

# ENGAGING WITH STAKEHOLDERS



CRITICAL ECOSYSTEM  
PARTNERSHIP FUND

Developed by Rosie Trevelyan, Tropical Biology Association

Photo: © O. Langrand

# CONSULTATION

with your stakeholders ensures your project design will address their interests and needs.

# ENGAGEMENT

with stakeholders at all stages of your project helps ensure your impacts will be sustainable.



# ENGAGING WITH STAKEHOLDERS



**PROJECT DESIGN**

**PROJECT PROPOSAL**



Consult and engage with stakeholders.

Describe who your stakeholders are and how you will engage them.

**CEPF requires best practice on stakeholder engagement.**





## WHO IS A STAKEHOLDER?

A **STAKEHOLDER** is anyone who has an interest in your project, or who might be affected by your project.

E.g., local communities, Indigenous people, local government, private companies, NGOs.

## WHAT ARE THE BENEFITS OF ENGAGING WITH STAKEHOLDERS?



- ✓ Helps you **solve your conservation problem** from their useful knowledge and ideas.
- ✓ Develops **ownership** – everyone has a part to play.
- ✓ Ensures the right people **benefit** and **avoids harm**.
- ✓ Lends **legitimacy** and **credibility**.

# STAKEHOLDER ANALYSIS: A USEFUL TOOL



- ✓ Makes sure you **don't miss** out any of your stakeholders
- ✓ Helps you understand their **views and interests**
- ✓ Ensures you know **what role** they have in your project

Stakeholder	Interests	How they are likely to be affected by the project
1		
2		
3		

# HOW TO CONSULT AND ENGAGE WITH YOUR STAKEHOLDERS



# HOW DO YOU CONSULT WITH YOUR STAKEHOLDERS?

Public meetings

Interviews

Participatory methods

Surveys

Questionnaires



How do YOU consult with YOUR stakeholders?



# ENSURE FAIR PARTICIPATION OF STAKEHOLDERS IN YOUR PROJECT




**CONSULTATION**

**DESIGN**

**IMPLEMENTATION**

- **Ensure all social groups can participate.** Think about:
  - Time of day they might not be free
  - If costs of participating will exclude any group(s)
- **Are any stakeholders dominating?**
  - How will you ensure ALL groups can participate and have their voices heard?
- **Will all stakeholders benefit fairly from your project?**
  - How will you make sure none are negatively impacted?

# HOW TO SHOW BEST PRACTICE STAKEHOLDER ENGAGEMENT IN YOUR PROJECT PROPOSAL?

- ✓ Explain who your **STAKEHOLDERS** are
- ✓ ... and how you have consulted with them. 
- ✓ Describe what their roles are in your project and how they will benefit.



## DON'T FORGET TO INCORPORATE GENDER

- ✓ Incorporate gender at all stages
- ✓ Explain how you have done this in your proposal (and, later on, in your reports).



## NETWORKS AND PARTNERSHIPS

- ✓ Your project design must incorporate partnering or networking activities that strengthen links among local communities, civil society organizations and/or other actors
- ✓ Ensure that these partners are consulted during the design of the project
- ✓ Letters of support from your partners will strengthen your application



# CEPF BEST PRACTICE ON STAKEHOLDER ENGAGEMENT



Proposal must cover CEPF's expectations for engagement with stakeholders throughout the project cycle.

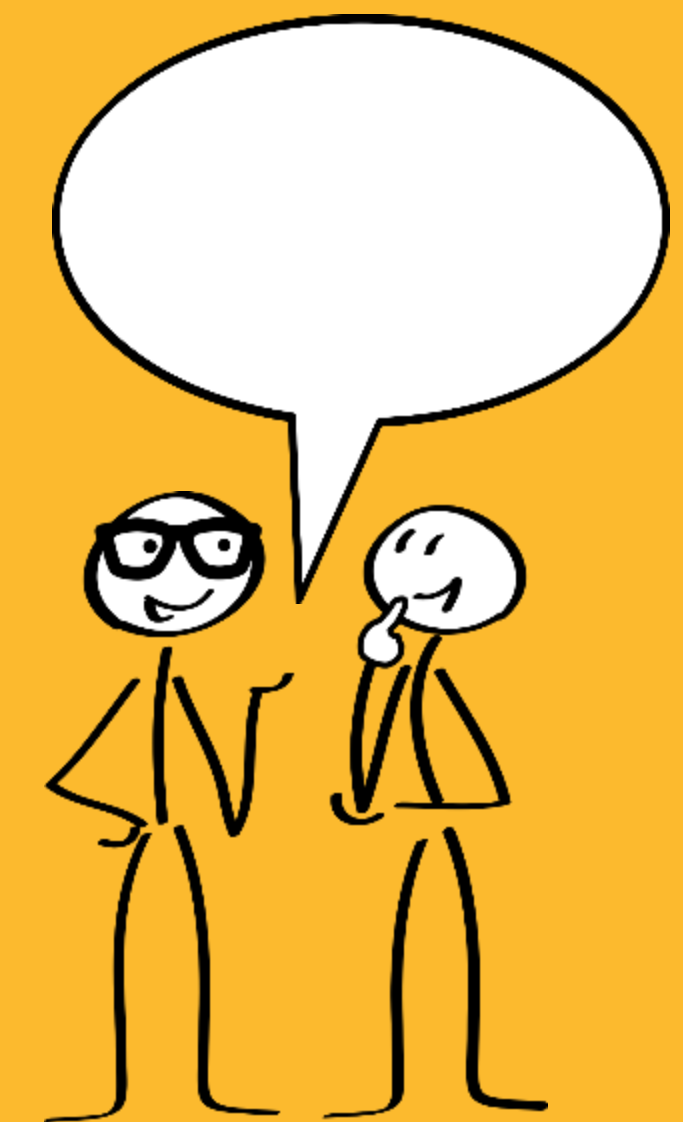
You must will ensure that members of disadvantaged or vulnerable groups (e.g., women, youth, persons with disabilities) are able to participate in this process fully and effectively, including by making provision for separate or targeted engagement where required, and by conducting consultations in a manner that does not put vulnerable individuals or groups at risk.

PROJECT PROPOSAL

The proposal must describe your approach in the section on Stakeholder Engagement



Each proposal must also contain a **GRIEVANCE MECHANISM**.



## ORGANIC AGRICULTURE....

A way towards eco friendly and self reliant lifestyle...

**Project name:** Conservation of bio-diversity hotspot through capacity building of forest dependent communities through the promotion of organic farming in Dandeli Wild Life Sanctuary of North Kanara district, Karnataka, India

**Chief investigator: Mr. Ganapati Bhat**

### INTRODUCTION

Recording the impact of organic as well as chemical agricultural practices around Dandeli Wild Life Sanctuary. Studying eco friendly and bio-diversity friendly traditional farming practices and trying to rejuvenate such methods. Introducing variety of organic farming methods to the farmers and interns conserve bio-diversity are the main activities of the project.

### WHAT IS THIS ORGANIC AGRICULTURE?

Organic agriculture is also called as natural farming. It is a method followed by our ancestors for thousands of years using available



Which mechanism will YOU use?



Please contact following address for any grievance or complaints regarding this project

**Dr. Bhaskar Acharya**

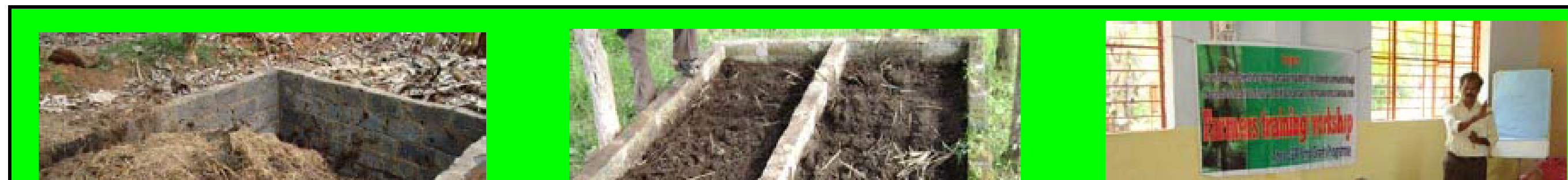
Project Coordinator ATREE – CEPF, Jakkur Post, Bengaluru. Tel: 9008322664

And

**Sri V. M. Halli**, Taluk Watershed Officer, Joida Phone: 9449126530

**Dr. Satish Panwar**, D.C. F. Wild Life Division, Forest Department, Near Depot, Dandeli

Phone: 08284-231585





### ដំណាំស្រូវប្រកបដោយនិរន្តរភាព

លើកកម្ពស់ផលិតកម្មស្រូវដើម្បីរួមចំណែកក្នុងការការពារសត្វព្រៃ និងលើកកម្ពស់ជីវភាពរស់នៅរបស់សហគមន៍

#### គម្រោង៖ ការបង្ការការងារអភិរក្សប្រកបដោយប្រសិទ្ធភាពទៅបរិស្ថាន

អនុវត្តដោយអង្គការសន្សំម្លប់ព្រៃ (SMP)

ការគ្រប់គ្រងតំបន់ការពារ និងធនធានធម្មជាតិអនុវត្តក្នុងលក្ខណៈសម្របសម្រួលដោយមានការផ្តល់ព័ត៌មានជាមុន តាមរយៈការពិគ្រោះយោបល់ជាមួយសហគមន៍មូលដ្ឋានដោយយុត្តិធម៌ និងបើកចំហរ យោងលើ «ការអនុវត្តល្អ» នៃដំណើរការកំណត់ និងការបែងចែកតំបន់គ្រប់គ្រងដោយមានការចូលរួម ការបង្កើតផែនការគ្រប់គ្រងអភិរក្ស និងកិច្ចសហប្រតិបត្តិការគ្រប់គ្រងក្នុងតំបន់ការពារធម្មជាតិនៃព្រះរាជាណាចក្រកម្ពុជា។ គម្រោងនឹងផ្តល់ព័ត៌មានអំពីវិធីសាស្ត្រនៃការចូលរួមក្នុងការបង្កើតគោលការណ៍ណែនាំថ្នាក់ជាតិ និងបទដ្ឋាន ថ្នាក់ក្រោមជាតិទាំងឡាយផ្អែកលើ ពង្រាងក្រមថ្មីស្តីអំពី «បរិស្ថាន និងធនធានធម្មជាតិ» ដែលទាក់ទងនឹងផ្នែកកិច្ចសហប្រតិបត្តិការ គ្រប់គ្រងក្នុងតំបន់ការពារធម្មជាតិ (រួមមានការបែងចែកនិងកំណត់តំបន់គ្រប់គ្រងដោយ មានការចូលរួម) និងកិច្ចសហប្រតិបត្តិការអន្តរស្ថាប័នក្នុងការទប់ស្កាត់ឧក្រិដ្ឋកម្មសត្វព្រៃ។



Which mechanism will YOU use?



ប្រសិនបើលោកអ្នកមានមតិយោបល់ដើម្បីជួយកែលម្អគម្រោង សូមទំនាក់ទំនងមក អ្នកគ្រប់គ្រងកម្មវិធី អង្គការសន្សំម្លប់ព្រៃ លោក កែវ សុជាតិ ទូរស័ព្ទ៖ 086 550027 អ្នកតំណាងអង្គការ CEPF លោក ហុង ចំណាន ទូរស័ព្ទ៖ 012 044429

ဒေသခံပြည်သူအစုအဖွဲ့ပိုင်သစ်  
စိုက်ခင်း

မြို့စုကေ(၃၄၅-၆၄) စုစုပေါင်း(၈၈၁-၃၄)ကေ-၂၀၁၇-ခုနှစ်  
စိုက်ခင်း(၅၃၅-၇၀)  
မိုးညှင်းမြို့နယ် - ဟိုပင်မြို့ - ဇီးကုန်းကျေးရွာ

CF  
အစုအဖွဲ့ပိုင်တော

သစ်ပင်-ဝါးမခတ်ရ  
တောမီးမရှိရ

လူတို့၏အသက်မွေးကြော  
သဘာဝတောများမျိုးဆက်နိုင်ရန်  
စောင့်ရှောက်ရန်အတွက်အရေးကြီးသော  
စည်းကမ်းချက်များကိုအောက်ဖော်ပြပါ

စောင့်ရှောက်ရန်အတွက်အရေးကြီးသော  
စည်းကမ်းချက်များကိုအောက်ဖော်ပြပါ

- တောမီးရှို့ခြင်း
- အလွန်အကျွံ  
သစ်ပင်ဖြတ်ခြင်း  
ထင်းခုတ်ခြင်း
- အမဲလိုက်ခြင်း
- ရွှေနှင့်ဓာတ်သတ္တု  
ထူးဖော်ခြင်း
- တောကျွတ်များအား  
ရွှေ၊ ခြောက်တောင်သာ  
ခုတ်ထွင်ခြင်း
- သစ်တောများအား  
ပိုက်ဖျက်ခြင်း၊  
ပြုပြင်ထိန်းသိမ်းခြင်း

Which  
mechanism  
will YOU  
use?





Which mechanism will YOU use?







Which mechanism will YOU use?

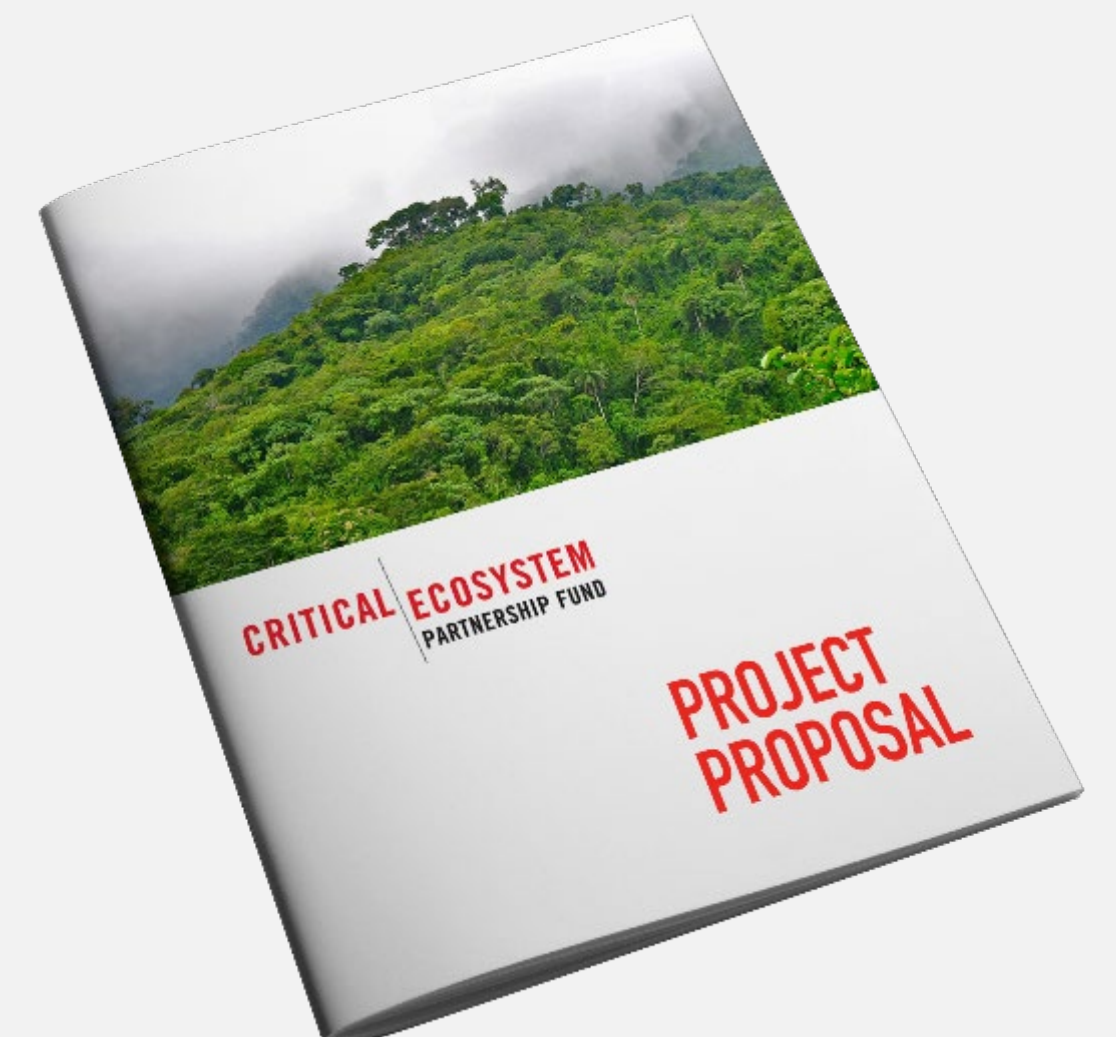


## WHAT YOU'VE LEARNT

**1** **STAKEHOLDERS** are key to your project's success.

**2** Consult and engage with stakeholders at all stages of your project, from design to completion.

**3** Explain **WHO** your **STAKEHOLDERS** are and **HOW** you will engage with them in your project proposal.



# QUESTIONS

