



© Conservation International / photo by Michele Zador

Critical Ecosystem Partnership Fund Caribbean Hotspot Project

Stakeholder Consultation Meeting
14 September 2020



CONTENTS

- Background
- Project overview
- Overview of World Bank Environmental and Social Framework
- Project stakeholders and vulnerable groups
- Risks and impacts
- Mitigation measures
- Grievance mechanism
- Next steps

BACKGROUND



BACKGROUND

- CEPF is a donor partnership, created in 2000 to enable civil society to protect the world's biodiversity hotspots.
- The World Bank is a founder member of CEPF.
- Between 2010 and 2016, CEPF invested \$6.9 million towards safeguarding the Caribbean's biodiversity and preventing extinctions.
- CEPF plans a new phase of investment in the Caribbean Islands, to build on gains made during the initial phase and make further progress with conserving the hotspot's rich biodiversity.
- This phase will be financed through a World Bank project.

BACKGROUND

- The new phase of CEPF investment will address priorities set out in the “ecosystem profile” for the Caribbean Islands Biodiversity Hotspot.
- The ecosystem profile is a situational analysis of the social, environmental, economic and political conditions that inform and influence biodiversity conservation efforts in the hotspot.

BACKGROUND

- The ecosystem profile was developed in 2017-2019 by the Caribbean Natural Resources Institute (CANARI) and BirdLife International, with technical support from the International Union for Conservation of Nature (IUCN) and New York Botanical Garden.
- The consultation process engaged 175 stakeholders from 94 organizations within civil society, government, the private sector and the donor community.

BACKGROUND

- The ecosystem profile identifies 33 priority sites (Key Biodiversity Areas) in eight countries that are considered the highest priorities for CEPF investment.
- The ecosystem profile also identifies 19 thematic priorities for investment grouped into six strategic directions.
- The ecosystem profile was approved by CEPF's Donor Council in August 2019.
- Since then, the CEPF Secretariat and the World Bank have been developing a project that will finance the implementation of the priorities identified in the ecosystem profile.

BACKGROUND

The project will focus on seven countries:

- Antigua and Barbuda
- The Bahamas
- Dominican Republic
- Haiti
- Jamaica
- Saint Lucia
- Saint Vincent and the Grenadines

PROJECT OVERVIEW



PROJECT OVERVIEW

- Project title: Critical Ecosystem Partnership Fund – Caribbean Hotspot Project (P173464)
- Project start date: February 2021
- Project end date: October 2027
- Total project cost: US\$13.9 million
- Financing instrument: Investment Project Financing

OBJECTIVES

- The project development objective (PDO) is to improve the capacity of civil society organizations to reduce threats to globally important biodiversity in the Caribbean Islands Biodiversity Hotspot.
- The long-term outcome is strengthened protection and management of globally important biodiversity within priority Key Biodiversity Areas and conservation corridors.

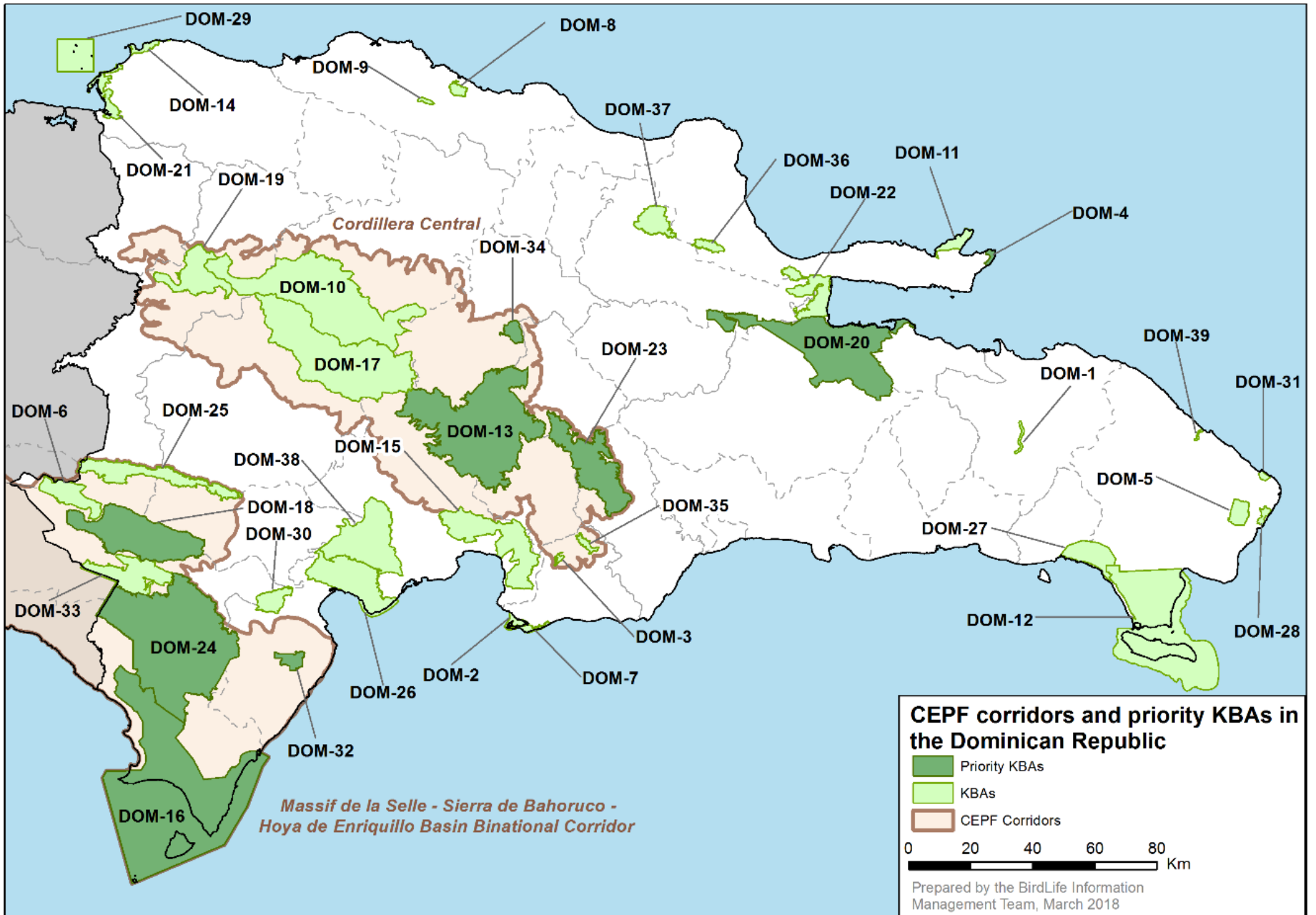
COMPONENTS

1. Increased Share of Land and Sea in and around Priority Key Biodiversity Areas under Improved Management
2. Increased Capacity of CSOs in Conservation
3. Increased Capacity of RIT in Leadership and Coordination of CSO Conservation Actions
4. Strengthened CSO Partnerships for Conservation

COMPONENT 1

- This component will support a grant mechanism that focuses on building capacity of CSOs to reduce threats to globally important biodiversity.
- Grant-making will support conservation actions in and around 32 priority Key Biodiversity Areas in seven countries.
- CEPF grant making will also support complementary conservation actions in seven priority corridors.
- Morne Diablotin National Park in Dominica will be addressed through a separate World Bank project.

Increased Share of Land and Sea in and around Priority Key Biodiversity Areas under Improved Management

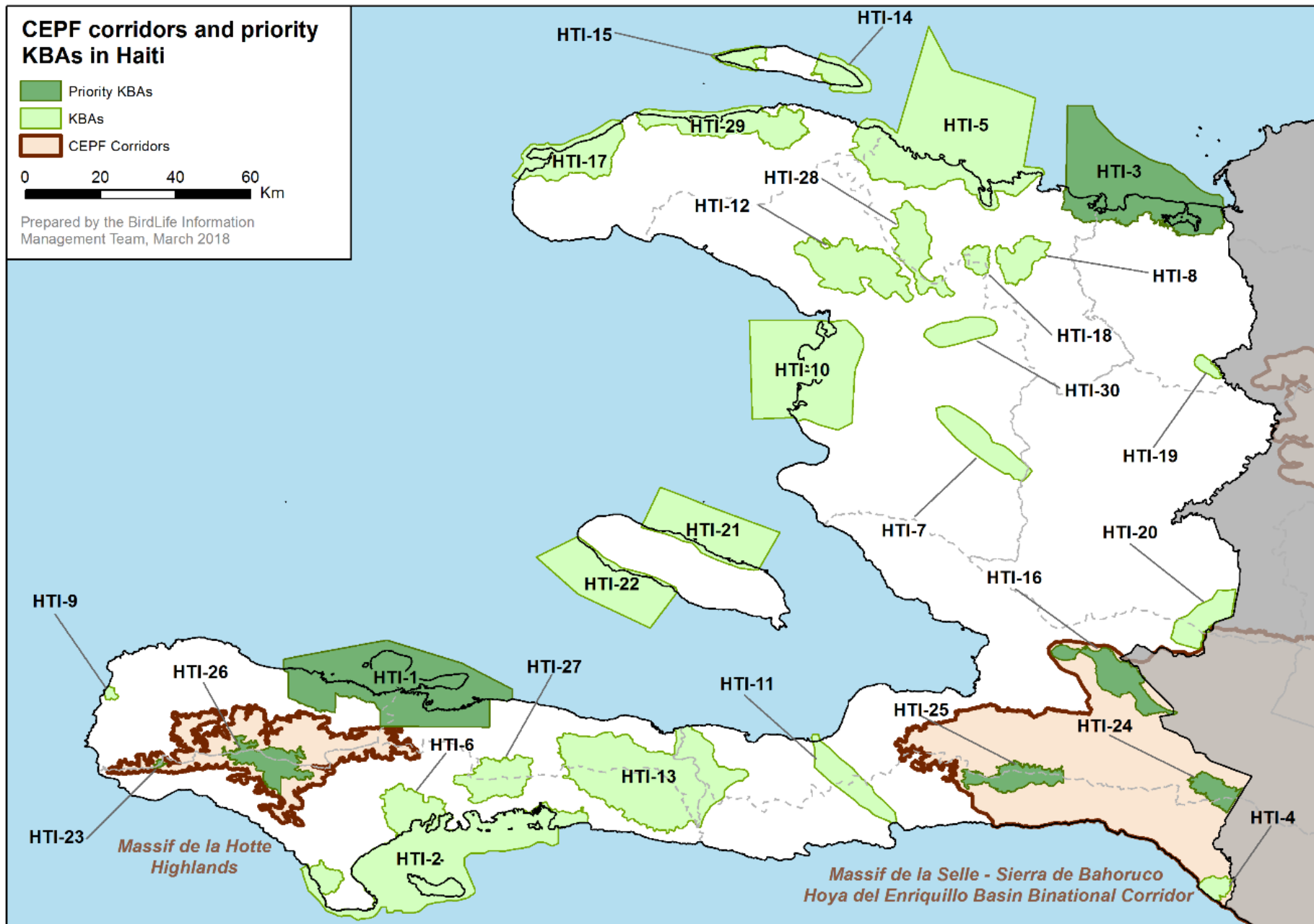


CEPF corridors and priority KBAs in Haiti

- Priority KBAs
- KBAs
- CEPF Corridors

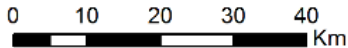
0 20 40 60 Km

Prepared by the BirdLife Information Management Team, March 2018



CEPF corridors and priority KBAs in Jamaica

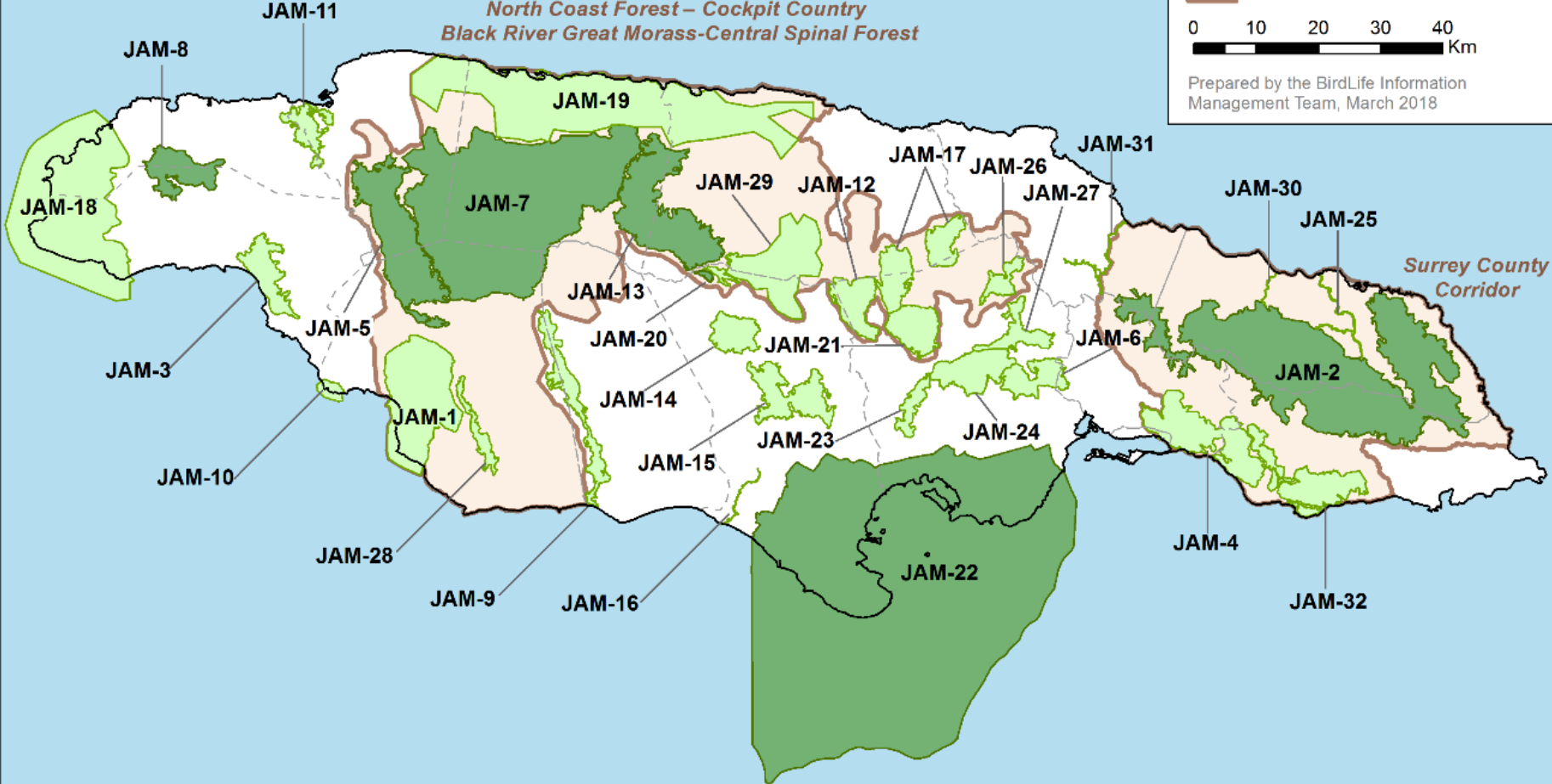
- Priority KBAs
- KBAs
- CEPF Corridors



Prepared by the BirdLife Information Management Team, March 2018

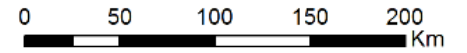
*North Coast Forest – Cockpit Country
Black River Great Morass-Central Spinal Forest*

Surrey County Corridor

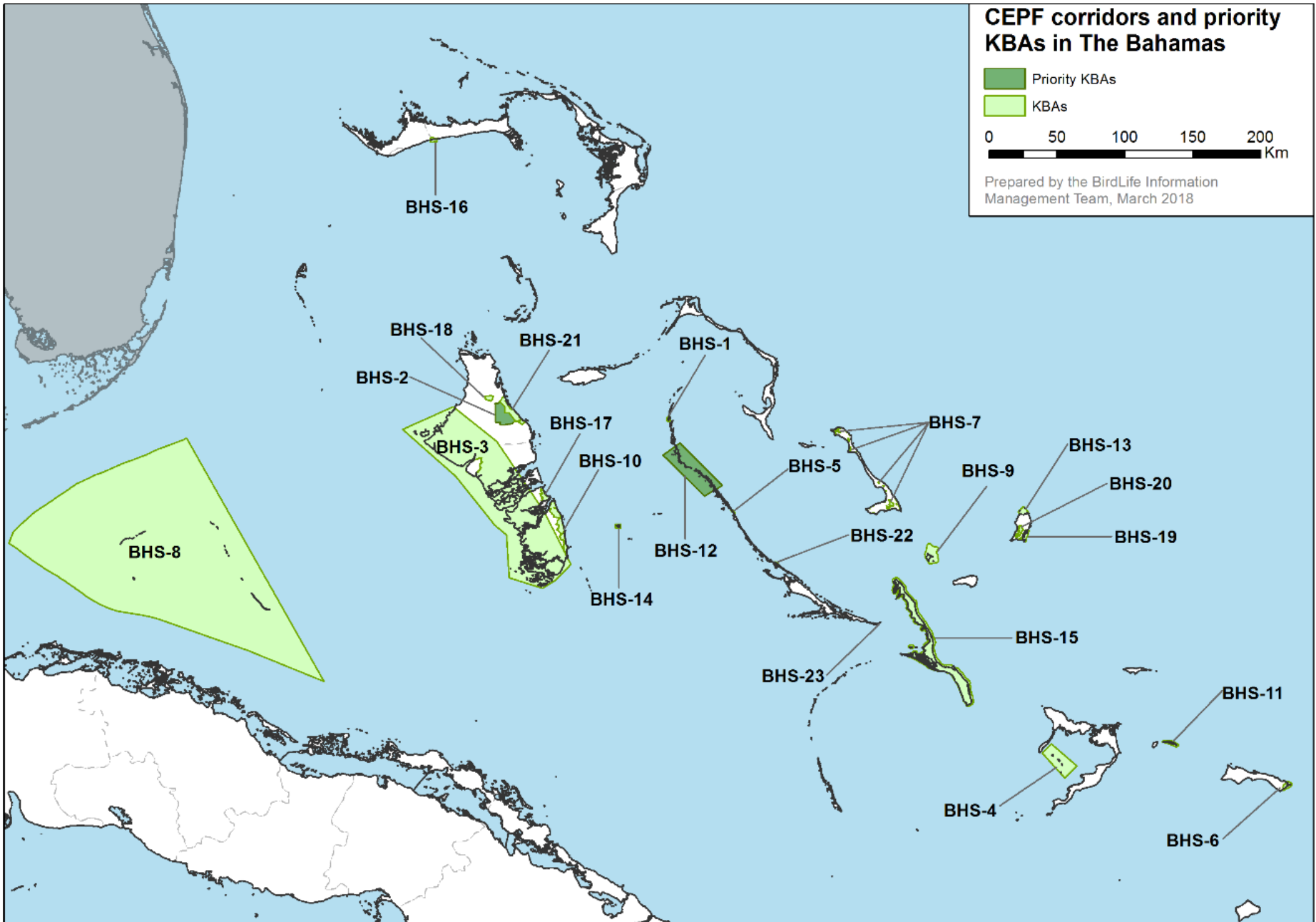


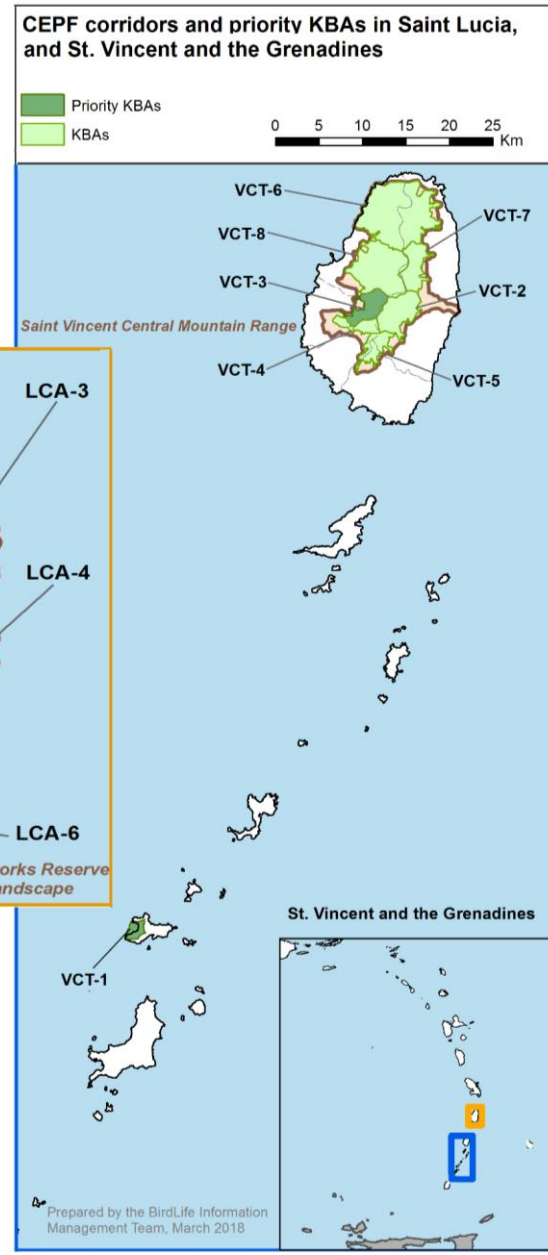
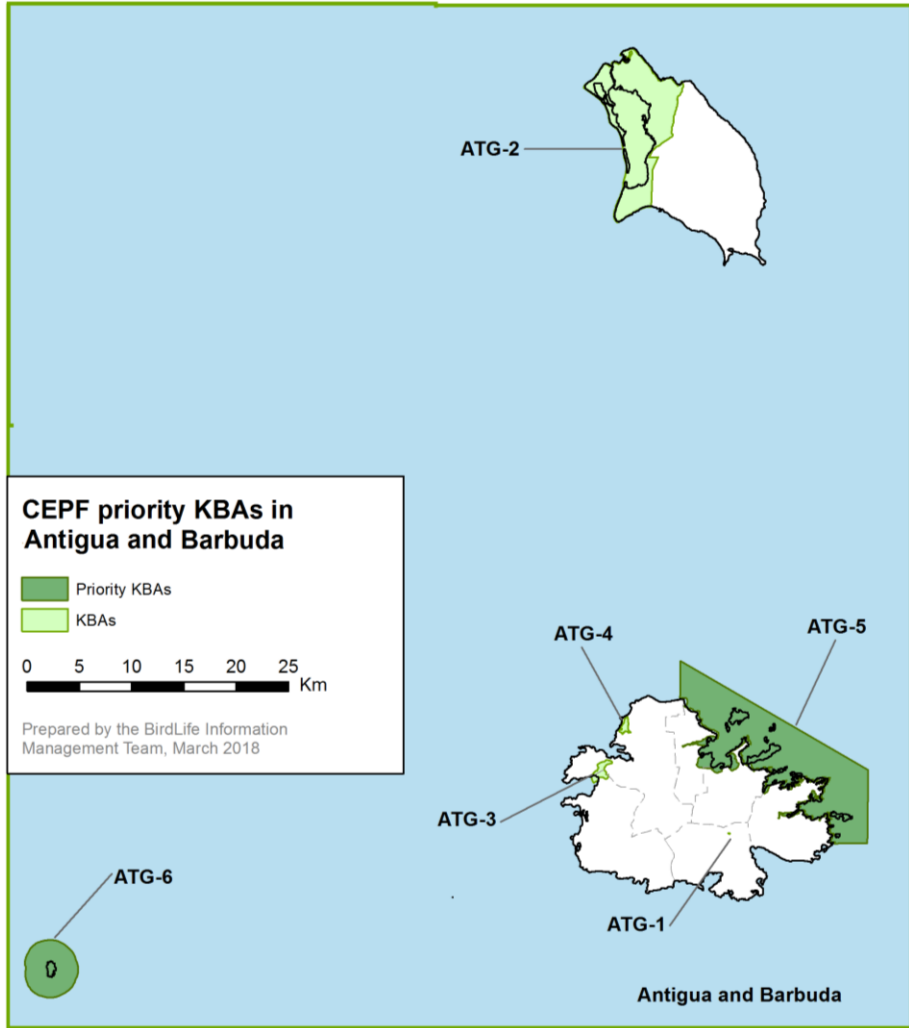
CEPF corridors and priority KBAs in The Bahamas

- Priority KBAs
- KBAs



Prepared by the BirdLife Information Management Team, March 2018





COMPONENT 2

Increased Capacity of CSOs in Conservation

- This component will further strengthen the capacity of CSOs in the conservation and sustainable use of biodiversity.
- This will be executed through a combination of grants to CSOs, and direct training and mentoring of CSOs by CANARI.

COMPONENT 3

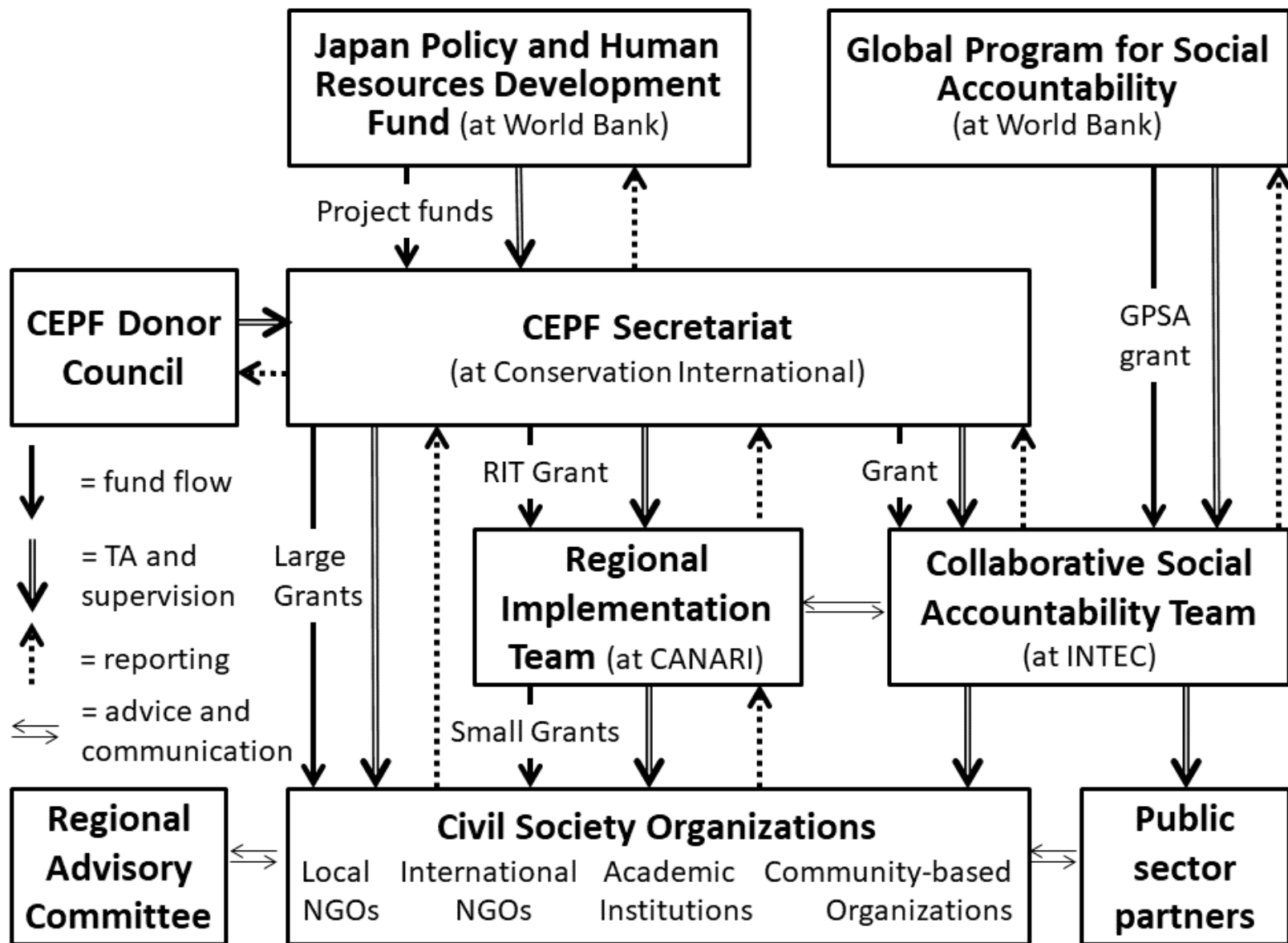
Increased Capacity of RIT in Leadership and Coordination of CSO Conservation Actions

- This component will strengthen the capacity of the Regional Implementation Team (RIT) at CANARI.
- The RIT will be responsible for providing strategic leadership and local knowledge to build a broad constituency of CSOs working towards the conservation goals described in the ecosystem profile.

COMPONENT 4

Strengthened CSO Partnerships for Conservation

- This component will facilitate partnerships of CSOs and other stakeholders to design and implement conservation actions in and around priority KBAs.
- In the Dominican Republic, Antigua and Barbuda, Jamaica and Saint Lucia, this component will be led by the Instituto Tecnológico de Santo Domingo (INTEC), with additional support from the WB Global Program for Social Accountability.
- In The Bahamas, Haiti and Saint Vincent and the Grenadines, this component will be led by CANARI.



EXPECTED RESULTS

- At least 20 targeted civil society organizations with increased capacity to reduce threats to biodiversity.
- At least 20 targeted civil society organizations with increased organizational capacity
- At least 15 civil society organizations with sufficient capacity to participate in conservation-related networks
- At least 20 priority KBAs with reduced threat(s) to biodiversity

OVERVIEW OF WB ESF



OVERVIEW OF WB ESF

- The World Bank Environmental and Social Framework (ESF) protects people and the environment from potential adverse impacts that could arise from Bank-financed projects and promotes sustainable development.
- The ESF replaces the “Safeguard Policies” previously used by the World Bank.
- The ESF includes 10 Environmental and Social Standards (ESS), which set out the requirements that apply to Borrowers.

OVERVIEW OF WB ESF

The following ESSs are relevant to the project:

- **ESS1:** Assessment and Management of Environmental and Social Risks and Impacts
- **ESS2:** Labor and Working Conditions
- **ESS3:** Resource Efficiency and Pollution Prevention and Management
- **ESS4:** Community Health and Safety
- **ESS5:** Land Acquisition, Restrictions on Land Use and Involuntary Resettlement
- **ESS6:** Biodiversity Conservation and Sustainable Management of Living Natural Resources
- **ESS8:** Cultural Heritage
- **ESS10:** Stakeholder Engagement and Information Disclosure

PROJECT STAKEHOLDERS



PROJECT STAKEHOLDERS

The following stakeholders have been preliminarily identified:

- Local communities at sub-project sites.
- Local government agencies.
- International NGOs.
- Local NGOs.
- Academic institutions.
- Community-based organizations.
- Private landowners.

VULNERABLE GROUPS

The following vulnerable groups have been preliminarily identified:

- Women.
- Young people.
- Elderly people.
- LGBTI persons.
- Members of women-headed households.
- Members of poor households.
- Members of landless households.
- Jamaican Maroons.

RISKS AND IMPACTS



ENVIRONMENTAL RISKS

Risk/impact	Applicable standard
Pollution of natural ecosystems, including from pesticides	ESS3 – Pollution Prevention and Management
Harm to non-target species during eradication or control of invasive alien species (IAS)	ESS3 – Pollution Prevention and Management
Conversion of habitats due to expansion of commercial agriculture or forestry plantations	ESS6 – Biodiversity Conservation
Overharvesting of living natural resources (e.g., fish, non-timber forest products, etc.)	ESS6 – Biodiversity Conservation
Introduction/spread of IAS	ESS6 – Biodiversity Conservation

SOCIAL RISKS

Risk/impact	Applicable standard
Hazards to project workers (e.g., steep terrain, infectious diseases, extreme weather events)	ESS2 – Labor and Working Conditions
Physical, psychological or sexual abuse of project workers	ESS2 – Labor and Working Conditions
Unfair treatment or discrimination of project workers	ESS2 – Labor and Working Conditions
Health impacts from unsafe storage or use of pesticides	ESS3 – Pollution Prevention and Management

SOCIAL RISKS (CONT...)

Risk/impact	Applicable standard
Hazards to local people (e.g., steep terrain, infectious diseases, extreme weather events)	ESS4 – Community Health and Safety
Security personnel (e.g. park guards) engaging in unlawful or abusive acts against local people	ESS4 – Community Health and Safety
Transmission of COVID-19 or other communicable diseases	ESS4 – Community Health and Safety

SOCIAL RISKS (CONT...)

Risk/impact	Applicable standard
Involuntary resettlement of people, due to physical and/or economic displacement	ESS5 – Restrictions on Land Use
Restrictions on access to natural resources within a protected area or communally managed property	ESS5 – Restrictions on Land Use
Loss of livelihoods or income among affected communities	ESS5 – Restrictions on Land Use

SOCIAL RISKS (CONT...)

Risk/impact	Applicable standard
Disturbance or damage to cultural heritage, due to promotion of nature-based tourism	ESS8 – Cultural Heritage
Reduced social acceptance of projects and/or diminished environmental and social sustainability	ESS10 – Stakeholder Engagement
Elite capture and social exclusion from project activities and/or benefits	ESS10- Stakeholder Engagement

MITIGATION MEASURES



MITIGATION MEASURES

Project Impacts	Mitigation Measures
<p data-bbox="170 486 745 589">ESS2 – Labor and Working Conditions</p> <ul data-bbox="170 615 935 972" style="list-style-type: none"><li data-bbox="170 615 832 658">• Hazards to project workers.<li data-bbox="170 676 935 786">• Physical, psychological or sexual abuse of project workers.<li data-bbox="170 805 780 972">• Unfair treatment or discrimination of project workers.	<ul data-bbox="977 494 1731 1300" style="list-style-type: none"><li data-bbox="977 494 1731 729">• Project workers and contractors engaged in accordance with the labor laws of the relevant countries.<li data-bbox="977 748 1707 791">• No use of child or forced labor.<li data-bbox="977 809 1707 986">• Best management practices to ensure worker safety and acceptable working conditions.<li data-bbox="977 1005 1727 1182">• Preparation of Labor Management Procedures for all sub-projects.<li data-bbox="977 1200 1707 1300">• Grievance redress mechanisms for project workers.

MITIGATION MEASURES

Project Impacts	Mitigation Measures
<p data-bbox="170 486 877 594">ESS3 – Pollution Prevention and Management</p> <ul data-bbox="170 611 935 1039" style="list-style-type: none"><li data-bbox="170 611 935 725">• Pollution of natural ecosystems, including from pesticides.<li data-bbox="170 739 935 911">• Harm to non-target species during eradication or control of invasive alien species (IAS).<li data-bbox="170 925 935 1039">• Health impacts from unsafe storage or use of pesticides.	<ul data-bbox="981 496 1754 1110" style="list-style-type: none"><li data-bbox="981 496 1754 611">• Preferential use of integrated pest management approaches.<li data-bbox="981 625 1754 796">• Avoidance of harmful pesticides, unless no suitable alternative is available.<li data-bbox="981 811 1754 982">• Compliance with relevant international standards and codes of conduct.<li data-bbox="981 996 1754 1110">• Preparation and implementation of Pest Management Plans.

MITIGATION MEASURES

Project Impacts	Mitigation Measures
<p data-bbox="166 482 838 594">ESS4 – Community Health and Safety</p> <ul data-bbox="166 611 929 1225" style="list-style-type: none"><li data-bbox="166 611 929 848">• Hazards to local people (e.g., steep terrain, infectious diseases, extreme weather events).<li data-bbox="166 865 929 1102">• Security personnel (e.g. park guards) engaging in unlawful or abusive acts against local people.<li data-bbox="166 1119 929 1225">• Transmission of COVID-19 or other communicable diseases.	<ul data-bbox="977 494 1750 1360" style="list-style-type: none"><li data-bbox="977 494 1750 668">• Close monitoring of weather reports during hurricane season, and avoidance of peak season.<li data-bbox="977 685 1750 859">• Risk assessments, background checks, training and close oversight of security personnel.<li data-bbox="977 876 1750 985">• No purchase of firearms or other weapons.<li data-bbox="977 1002 1750 1233">• Adherence to all applicable international, national or local regulations and advisories related to COVID-19.<li data-bbox="977 1250 1750 1360">• Preparation and implementation of Health and Safety Plans.

MITIGATION MEASURES

Project Impacts	Mitigation Measures
<p>ESS5 – Restrictions on Land Use</p> <ul style="list-style-type: none">• Involuntary resettlement of people, due to physical and/or economic displacement.• Restrictions on access to natural resources within a protected area or communally managed property.• Loss of livelihoods or income among affected communities.	<ul style="list-style-type: none">• No purchase of land.• No physical resettlement of people (voluntary or involuntary).• Provision of alternative access to natural resources, direct cash compensation and/or livelihood restoration activities.

MITIGATION MEASURES

Project Impacts	Mitigation Measures
<p data-bbox="170 486 890 529">ESS6 – Biodiversity Conservation</p> <ul data-bbox="170 551 938 1036" style="list-style-type: none"><li data-bbox="170 551 938 779">• Conversion of habitats due to expansion of commercial agriculture or forestry plantations.<li data-bbox="170 801 938 972">• Overharvesting of living natural resources (e.g., fish, non-timber forest products, etc.).<li data-bbox="170 993 938 1036">• Introduction/spread of IAS.	<ul data-bbox="977 494 1750 1165" style="list-style-type: none"><li data-bbox="977 494 1750 665">• No activities that have potential to causes adverse impacts to critical habitat.<li data-bbox="977 686 1750 858">• Sub-project-specific measures to mitigate any unavoidable impacts to natural habitat.<li data-bbox="977 879 1750 979">• Sustainable harvesting of living natural resources.<li data-bbox="977 1001 1750 1165">• Preparation and implementation of Environmental Management Plans.

MITIGATION MEASURES

Project Impacts	Mitigation Measures
<p>ESS8 – Cultural Heritage</p> <ul style="list-style-type: none">• Disturbance or damage to cultural heritage, due to promotion of nature-based tourism.	<ul style="list-style-type: none">• No removal or alteration of any physical cultural heritage property.• Establishment of “chance finds” procedures for artefacts having archeological, paleontological, historical, religious or unique natural values.

MITIGATION MEASURES

Project Impacts	Mitigation Measures
<p>ESS10 – Stakeholder Engagement</p> <ul style="list-style-type: none">• Reduced social acceptance of projects and/or diminished environmental and social sustainability.• Elite capture and social exclusion from project activities and/or benefits.	<ul style="list-style-type: none">• Public disclosure of Environmental and Social Management Framework (ESMF) and sub-project-specific environmental and social instruments.• Preparation of Stakeholder Engagement Plans.• Establishment of sub-project-specific Grievance Redress Mechanisms.

GRIEVANCE MECHANISM



GRIEVANCE MECHANISM

Each grantee will be responsible for establishing two separate Grievance Redress Mechanisms (GRMs):




- A GRM for project workers (under ESS2).
- A GRM for community members and other stakeholders (under ESS10, and covering any other applicable ESSs)

GRM FOR PROJECT WORKERS

- Each grantee will make the mechanism accessible to all direct and contracted workers.
- The grantee will inform workers, at the time of their employment, of the existence of the grievance mechanism and of measures protecting them against reprisals for its use.
- Grantees may utilize existing grievance mechanisms, provided they are properly designed, sufficiently responsive and readily accessible to project workers.
- Alternatively, existing mechanisms may be supplemented with project-specific arrangements.

GRM FOR STAKEHOLDERS

- Each grantee will inform community members and other stakeholders, of the objectives of the sub-project, the relevant provisions of the applicable ESSs, and the existence of a GRM.
- Contact information of the grantee, the RIT and the CEPF Secretariat will be made publicly available using locally appropriate means (e.g., posters, community meetings, radio broadcasts, articles in print media, etc.).
- All reported grievances will be treated confidentially, and there will be no retribution to the claimant by the grantee, RIT or CEPF Secretariat.

Stage	Steps
GRM establishment	<ol style="list-style-type: none"><li data-bbox="625 201 1688 337">1. Inform stakeholders of the objectives of the sub-project, the relevant provisions of the ESSs and the existence of a grievance redress mechanism<li data-bbox="625 351 1663 436">2. Provide contact details of the grantee, the RIT, the CEPF Secretariat and the World Bank
	
Grievance level 1	<ol style="list-style-type: none"><li data-bbox="625 515 1508 551">1. Complainant submits grievance to sub-grantee<li data-bbox="625 565 1456 601">2. Grantee develops plan to address grievance<li data-bbox="625 615 1663 701">3. Grantee communicates grievance and proposed plan to CEPF/RIT (within 15 days)<li data-bbox="625 715 1653 751">4. With approval from CEPF/RIT, grantee implements plan
	
Grievance level 2	<ol style="list-style-type: none"><li data-bbox="625 829 1649 915">1. If complainant not satisfied, submits grievance to CEPF Executive Director<li data-bbox="625 929 1653 1015">2. CEPF Secretariat develops plan to address grievance, in consultation with grantee and RIT<li data-bbox="625 1029 1282 1065">3. CEPF Secretariat implements plan
	
Grievance level 3	<ol style="list-style-type: none"><li data-bbox="625 1150 1736 1236">1. If complainant still not satisfied, submits grievance to World Bank Grievance Redress Service<li data-bbox="625 1250 1653 1336">2. World Bank Grievance Redress Service investigates grievance and attempts to reach satisfactory resolution

NEXT STEPS



NEXT STEPS

- ESMF and presentation disclosed publicly on CEPF website.
- Consultation meetings to discuss stakeholder observations on the ESMF (28-30 September 2020).
- Period for online review and comments (until 15 October).
- Appraisal of project and contracting (October-December).
- Establishment of RIT and CSAT (January 2021).
- First calls for proposals (approx. January 2021).
- First sub-grant awards (approx. June 2021 onwards).

NEXT STEPS

Suggested questions:

1. What other risks do you see? What measures can be taken to address them?
2. What other activities could be important to reach the Project Development Objective and expected results?
3. What other stakeholders and vulnerable groups should be considered?
4. What do you suggest the project can do to enhance its social inclusion approach?

NEXT STEPS

The draft ESMF and this presentation are available on the CEPF website at the following link:

<https://www.cepf.net/caribbean-islands-project-public-consultation>

Verbal feedback can be provided at the second consultation meeting, on 29 September 2020.

Written feedback can be provided before 15 October 2020, to:

Michele Zador, CEPF Grant Director

+1-703-341-2635

mzador@cepf.net



THANK YOU!

www.cepf.net